



www.hwlok.com



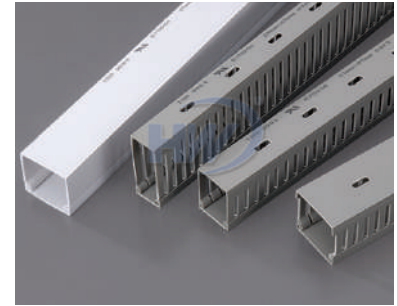
SLOTTED/ SOLID WALL WIRING DUCTS

- Hook-shaped design makes the cover and the slot more tight.
- Flush cover design
- Flexible & durable slot ribs
- Material flame rating: UL94V-0



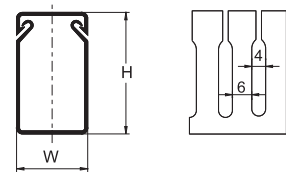
SLOTTED/ SOLID WALL WIRING DUCTS

- Easy and firm snap-on assembly, smooth joining for a better finish
- Solid wiring ducts without hole punctures are also available
- Manufactured with high quality rigid PVC for good insulation, flameretardant and heat resistant
- Material: PVC
- Length: 1.7M & 2.0M
- Color: White, grey, black, beige, blue

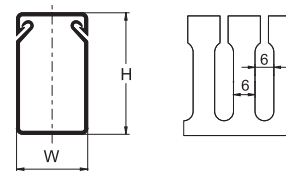


Part No.	Slot Hole Size			Width (W) mm (inch)	Height (H) mm (inch)	Wiring Volume	Mounting Hole Dimension
GW-1525	S		L	15.0 (0.59)	25.0 (0.98)	5-12 PCS	Small
GW-2020	S		L	20.0 (0.79)	20.0 (0.79)	5-12 PCS	Small
GW-2525	S		L	25.0 (0.98)	25.0 (0.98)	10-25 PCS	Small
GW-2540	S		L	25.0 (0.98)	40.0 (1.57)	20-25 PCS	Small
GW-2545	S	M	L	25.0 (0.98)	45.0 (1.77)	20-25 PCS	Small
GW-2565	S		L	25.0 (0.98)	65.0 (2.56)	40-45 PCS	Small
GW-3333	S	M	L	33.0 (1.30)	33.0 (1.30)	25-54 PCS	Small
GW-3345	S		L	33.0 (1.30)	45.0 (1.77)	40-55 PCS	Small
GW-3365	S		L	33.0 (1.30)	65.0 (2.56)	60-75 PCS	Small
GW-33100	S		L	33.0 (1.30)	100.0 (3.94)	180-200 PCS	Small
GW-4040	S		L	40.0 (1.57)	40.0 (1.57)	60-70 PCS	Small
GW-4060	S		L	40.0 (1.57)	60.0 (2.36)	100-115 PCS	Small
GW-4080	S		L	40.0 (1.57)	80.0 (3.15)	120-135 PCS	Small
GW-4545	S	M	L	45.0 (1.77)	45.0 (1.77)	60-70 PCS	Small
GW-4565	S	M	L	45.0 (1.77)	65.0 (2.56)	110-120 PCS	Small
GW-5050	S	M	L	50.0 (1.97)	50.0 (1.97)	80-90 PCS	Small
GW-50100	S		L	50.0 (1.97)	100.0 (3.94)	210-260 PCS	Small
GW-6040	S		L	60.0 (2.36)	40.0 (1.57)	100-115 PCS	Small
GW-6060	S		L	60.0 (2.36)	60.0 (2.36)	120-135 PCS	Small
GW-6080	S		L	60.0 (2.36)	80.0 (3.15)	180-210 PCS	Small
GW-6545	S		L	65.0 (2.56)	45.0 (1.77)	110-120 PCS	Small
GW-6565	S		L	65.0 (2.56)	65.0 (2.56)	110-120 PCS	Small
GW-70100			L	70.0 (2.76)	100.0 (3.94)	250-300 PCS	Large
GW-7264	S		L	72.0 (2.83)	64.0 (2.52)	200-220 PCS	Large
GW-8040	S		L	80.0 (3.15)	40.0 (1.57)	120-135 PCS	Large
GW-8060	S		L	80.0 (3.15)	60.0 (2.36)	180-210 PCS	Large
GW-8080			L	80.0 (3.15)	80.0 (3.15)	240-290 PCS	Large
GW-10060	S		L	100.0 (3.94)	60.0 (2.36)	240-290 PCS	Large
* GW-10080	S		L	100.0 (3.94)	80.0 (3.15)	260-310 PCS	Large
GW-100100			L	100.0 (3.94)	100.0 (3.94)	300-400 PCS	Large
GW-15075			L	150.0 (5.91)	75.0 (2.95)	335-500 PCS	Large

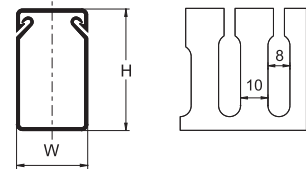
Slot Hole Size
S=4mm



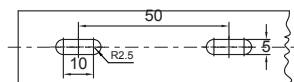
M=6mm



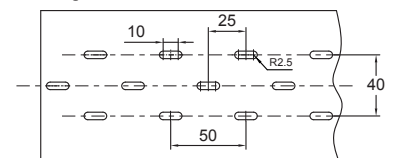
L=8mm



Mounting Hole Dimension
Small Duct



Large Duct



* Not included in UL E75050 accreditation. ** Wiring volume is base on wires of 2.0 sq. mm.

