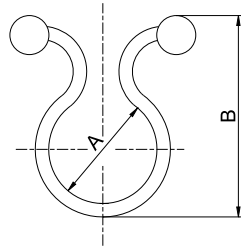


TWIST LOCKS

- Reusable and releasable for easy wire bundling
- Easy open-and-twist to cables
- Material: Polyamide 6,6, UL94V-2
- Color: Natural

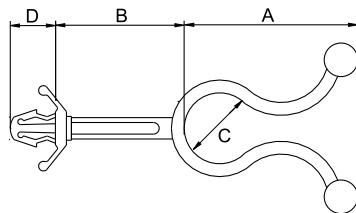


Part No.	A mm (inch)	B mm (inch)	Max.Bundle ø mm (inch)
TH-E	5.2 (0.21)	21.0 (0.83)	4.5 (0.18)
TH-F	8.3 (0.33)	25.2 (0.99)	7.3 (0.29)
TH-G	11.5 (0.45)	30.9 (1.22)	10.5 (0.41)
TH-H	15.0 (0.59)	35.1 (1.38)	14.0 (0.55)

Part No.	A mm (inch)	B mm (inch)	Max.Bundle ø mm (inch)
TH-I	18.0 (0.71)	40.0 (1.58)	17.0 (0.70)
TH-J	19.5 (0.77)	42.5 (1.67)	19.0 (0.75)
TH-K	22.5 (0.89)	45.5 (1.79)	22.0 (0.87)

TWIST LOCK WITH STANDOFF

- To separate wires from the board for avoiding hot components' interference
- Cable and wire bundles load and unload with a fingertip twist
- Material: Polyamide 6,6, UL94V-2
- Color: Natural



Part No.	A mm (inch)	B mm (inch)	C mm (inch)	D mm (inch)	Max.Bundle ø mm (inch)	Mounting Hole ø mm (inch)	Panel Thickness mm (inch)
TH-A	28.4 (1.12)	21.0 (0.83)	12.0 (0.47)	7.5 (0.30)	11.0 (0.43)	4.8 (0.19)	2.2 (0.09)
TH-B	19.4 (0.76)	33.5 (1.32)	6.0 (0.24)	7.5 (0.30)	5.0 (0.20)	4.8 (0.19)	2.2 (0.09)
TH-B1	19.0 (0.75)	6.0 (0.24)	6.0 (0.24)	7.5 (0.30)	5.0 (0.20)	4.8 (0.19)	2.2 (0.09)
TH-B2	19.4 (0.76)	33.5 (1.32)	5.5 (0.22)	7.5 (0.30)	4.5 (0.18)	4.8 (0.19)	2.2 (0.09)
TH-C	26.3 (1.04)	4.7 (0.19)	11.0 (0.43)	7.5 (0.30)	10.0 (0.39)	4.8 (0.19)	2.2 (0.09)