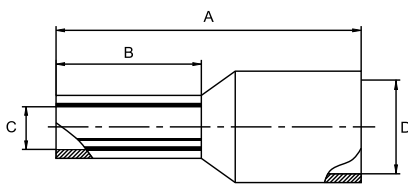


# CORD-END TERMINALS

- Insulation housing conforms to DIN color requirements
- Meets DIN standards for single wire containment
- Funnel entry for faster insertion and lower installed cost
- Designed with a seamless barrel to contain loose wire strands for superior terminations
- Ease of inserting wire into terminal block
- Suitable for limited space panel applications
- Multiple pin lengths available for a variety of terminal blocks
- Material: Copper tube with tin plated end sleeves with insulation Polyamide 6,6
- Temperature range: Up to 105°C (221°F)



Color (1)		Color (2)		Color DIN46228/4		Conductor sq. mm. (AWG)	Dimension mm (inch)				Tools
Part No. (W system)		Part No. (T system)		Part No. (DIN system)			A	B	C	D	
CE002506W	Light Blue	CE002506T	Violet			0.25 (26-24)	10.0 (0.39)	6.0 (0.24)	0.8 (0.03)	1.9 (0.07)	GIT-510
CE002508W	Light Blue	CE002508T	Violet			0.25 (26-24)	12.0 (0.47)	8.0 (0.31)	0.8 (0.03)	1.9 (0.07)	
CE003406W	Turquoise	CE003406T	Pink			0.34 (24-22)	10.0 (0.39)	6.0 (0.24)	0.8 (0.03)	1.9 (0.07)	
CE003408W	Turquoise	CE003408T	Pink			0.34 (24-22)	12.0 (0.47)	8.0 (0.31)	0.8 (0.03)	1.9 (0.07)	
CE005006W	Orange	CE005006T	White	CE005006D	White	0.50 (22-20)	12.0 (0.47)	6.0 (0.24)	1.0 (0.04)	2.6 (0.10)	GIT-510 GIT-516E1
CE005008W	Orange	CE005008T	White	CE005008D	White	0.50 (22-20)	14.0 (0.55)	8.0 (0.31)	1.0 (0.04)	2.6 (0.10)	
CE005010W	Orange	CE005010T	White	CE005010D	White	0.50 (22-20)	16.0 (0.63)	10.0 (0.39)	1.0 (0.04)	2.6 (0.10)	
CE007506W	White	CE007506T	Light Blue	CE007506D	Grey	0.75 (20-19)	12.0 (0.47)	6.0 (0.24)	1.2 (0.05)	2.8 (0.11)	
CE007508W	White	CE007508T	Light Blue	CE007508D	Grey	0.75 (20-19)	14.0 (0.55)	8.0 (0.31)	1.2 (0.05)	2.8 (0.11)	
CE007510W	White	CE007510T	Light Blue	CE007510D	Grey	0.75 (20-19)	16.0 (0.63)	10.0 (0.39)	1.2 (0.05)	2.8 (0.11)	
CE007512W	White	CE007512T	Light Blue	CE007512D	Grey	0.75 (20-19)	18.0 (0.71)	12.0 (0.47)	1.2 (0.05)	2.8 (0.11)	
CE010006W	Yellow	CE010006T	Red	CE010006D	Red	1.00 (18)	12.0 (0.47)	6.0 (0.24)	1.4 (0.06)	3.0 (0.12)	
CE010008W	Yellow	CE010008T	Red	CE010008D	Red	1.00 (18)	14.0 (0.55)	8.0 (0.31)	1.4 (0.06)	3.0 (0.12)	
CE010010W	Yellow	CE010010T	Red	CE010010D	Red	1.00 (18)	16.0 (0.63)	10.0 (0.39)	1.4 (0.06)	3.0 (0.12)	
CE010012W	Yellow	CE010012T	Red	CE010012D	Red	1.00 (18)	18.0 (0.71)	12.0 (0.47)	1.4 (0.06)	3.0 (0.12)	
CE015008W	Red	CE015008T	Black	CE015008D	Black	1.50 (16)	14.0 (0.55)	8.0 (0.31)	1.7 (0.07)	3.5 (0.14)	
CE015010W	Red	CE015010T	Black	CE015010D	Black	1.50 (16)	16.0 (0.63)	10.0 (0.39)	1.7 (0.07)	3.5 (0.14)	
CE015012W	Red	CE015012T	Black	CE015012D	Black	1.50 (16)	18.0 (0.71)	12.0 (0.47)	1.7 (0.07)	3.5 (0.14)	
CE015018W	Red	CE015018T	Black	CE015018D	Black	1.50 (16)	24.0 (0.94)	18.0 (0.71)	1.7 (0.07)	3.5 (0.14)	

# CORD-END TERMINALS

Color (1)		Color (2)		Color DIN46228/4		Conductor sq. mm. (AWG)	Dimension mm (inch)				Tools
Part No. (W system)		Part No. (T system)		Part No. (DIN system)			A	B	C	D	
CE025008W	Blue	CE025008T	Grey	CE025008D	Blue	2.50 (14)	14.0 (0.55)	8.0 (0.31)	2.2 (0.09)	4.2 (0.17)	GIT-510 GIT-516E1
CE025010W	Blue	CE025010T	Grey	CE025010D	Blue	2.50 (14)	16.0 (0.63)	10.0 (0.39)	2.2 (0.09)	4.2 (0.17)	
CE025012W	Blue	CE025012T	Grey	CE025012D	Blue	2.50 (14)	18.0 (0.71)	12.0 (0.47)	2.2 (0.09)	4.2 (0.17)	
CE025018W	Blue	CE025018T	Grey	CE025018D	Blue	2.50 (14)	24.0 (0.94)	18.0 (0.71)	2.2 (0.09)	4.2 (0.17)	
CE040010W	Grey	CE040010T	Orange	CE040010D	Grey	4.00 (12)	17.0 (0.67)	10.0 (0.39)	2.8 (0.11)	4.8 (0.19)	GIT-516E1
CE040012W	Grey	CE040012T	Orange	CE040012D	Grey	4.00 (12)	20.0 (0.79)	12.0 (0.47)	2.8 (0.11)	4.8 (0.19)	
CE040018W	Grey	CE040018T	Orange	CE040018D	Grey	4.00 (12)	26.0 (1.02)	18.0 (0.71)	2.8 (0.11)	4.8 (0.19)	
CE060012W	Black	CE060012T	Green	CE060012D	Yellow	6.00 (10)	20.0 (0.79)	12.0 (0.47)	3.5 (0.14)	6.3 (0.25)	GIT-516E2
CE060018W	Black	CE060018T	Green	CE060018D	Yellow	6.00 (10)	26.0 (1.02)	18.0 (0.71)	3.5 (0.14)	6.3 (0.25)	
CE100012W	Ivory	CE100012T	Brown	CE100012D	Red	10.00 (8)	22.0 (0.87)	12.0 (0.47)	4.5 (0.18)	7.6 (0.30)	GIT-516E2 GIT-516E3 GIT-518
CE100018W	Ivory	CE100018T	Brown	CE100018D	Red	10.00 (8)	28.0 (1.10)	18.0 (0.71)	4.5 (0.18)	7.6 (0.30)	
CE160012W	Green	CE160012T	Ivory	CE160012D	Blue	16.00 (6)	22.0 (0.87)	12.0 (0.47)	5.8 (0.23)	8.8 (0.35)	GIT-516E3 GIT-518
CE160018W	Green	CE160018T	Ivory	CE160018D	Blue	16.00 (6)	28.0 (1.10)	18.0 (0.71)	5.8 (0.23)	8.8 (0.35)	
CE250016W	Brown	CE250016T	Black	CE250016D	Yellow	25.00 (4)	30.0 (1.18)	16.0 (0.63)	7.3 (0.29)	11.2 (0.44)	GIT-516E3
CE250018W	Brown	CE250018T	Black	CE250018D	Yellow	25.00 (4)	32.0 (1.26)	18.0 (0.71)	7.3 (0.29)	11.2 (0.44)	GIT-516E4
CE250022W	Brown	CE250022T	Black	CE250022D	Yellow	25.00 (4)	36.0 (1.42)	22.0 (0.87)	7.3 (0.29)	11.2 (0.44)	GIT-518
CE350016W	Beige	CE350016T	Red	CE350016D	Red	35.00 (2)	30.0 (1.18)	16.0 (0.63)	8.3 (0.33)	12.7 (0.50)	GIT-516E4 GIT-518
CE350018W	Beige	CE350018T	Red	CE350018D	Red	35.00 (2)	32.0 (1.26)	18.0 (0.71)	8.3 (0.33)	12.7 (0.50)	
CE350025W	Beige	CE350025T	Red	CE350025D	Red	35.00 (2)	39.0 (1.54)	25.0 (0.98)	8.3 (0.33)	12.7 (0.50)	
CE500020W	Olive	CE500020T	Blue	CE500020D	Blue	50.00 (1/0)	36.0 (1.42)	20.0 (0.79)	10.3 (0.41)	15.0 (0.59)	
CE500025W	Olive	CE500025T	Blue	CE500025D	Blue	50.00 (1/0)	40.0 (1.57)	25.0 (0.98)	10.3 (0.41)	15.0 (0.59)	
CE700021W	Yellow	CE700021T	Yellow	CE700021D	Yellow	70.00 (2/0)	37.0 (1.46)	21.0 (0.83)	13.5 (0.53)	16.0 (0.63)	
CE950025W	Red	CE950025T	Red	CE950025D	Red	95.00 (3/0)	44.0 (1.73)	25.0 (0.98)	14.7 (0.58)	18.0 (0.71)	GIT-518
CE120027W	Blue	CE120027T	Blue	CE120027D	Blue	120.00 (4/0)	48.0 (1.89)	27.0 (1.06)	16.7 (0.66)	20.0 (0.79)	
CE150032W	Yellow	CE150032T	Yellow	CE150032D	Yellow	150.00 (250/300)	58.0 (2.28)	32.0 (1.26)	19.5 (0.77)	23.0 (0.91)	

\* DIN 46228/4