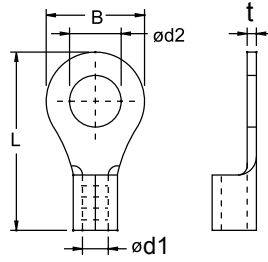


NON-INSULATED RING TERMINALS

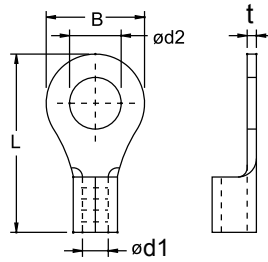
- Brazed seam protects terminal barrel from splitting during the crimping process
- Material: Copper



Part No.	Wire Range		Dimension mm (inch)					Stud Size	
	sq. mm.	AWG	d1	d2	B	L	t	mm	inch
R1.25-3B	0.5-1.5	22-16	1.9 (0.07)	3.2 (0.13)	5.5 (0.22)	11.5 (0.45)	0.7 (0.03)	M3	#5
R1.25-3.5B	0.5-1.5	22-16	1.9 (0.07)	3.7 (0.15)	5.5 (0.22)	11.5 (0.45)	0.7 (0.03)	M3.5	#6
R1.25-3.5LB	0.5-1.5	22-16	1.9 (0.07)	3.7 (0.15)	6.6 (0.26)	14.4 (0.57)	0.7 (0.03)	M3.5	#6
R1.25-4B	0.5-1.5	22-16	1.9 (0.07)	4.3 (0.17)	8.0 (0.31)	15.8 (0.62)	0.7 (0.03)	M4	#8
R1.25-4MB	0.5-1.5	22-16	1.9 (0.07)	4.3 (0.17)	6.6 (0.26)	14.4 (0.57)	0.7 (0.03)	M4	#8
R1.25-5B	0.5-1.5	22-16	1.9 (0.07)	5.3 (0.21)	8.0 (0.31)	15.8 (0.62)	0.7 (0.03)	M5	#10
R1.25-6B	0.5-1.5	22-16	1.9 (0.07)	6.4 (0.25)	11.6 (0.46)	21.5 (0.85)	0.7 (0.03)	M6	1/4"
R1.25-8B	0.5-1.5	22-16	1.9 (0.07)	8.4 (0.33)	11.6 (0.46)	21.5 (0.85)	0.7 (0.03)	M8	5/16"
R1.25-10B	0.5-1.5	22-16	1.9 (0.07)	10.5 (0.41)	13.7 (0.54)	25.5 (1.00)	0.7 (0.03)	M10	3/8"
R1.25-12B	0.5-1.5	22-16	1.9 (0.07)	13.0 (0.51)	19.0 (0.75)	28.7 (1.13)	0.7 (0.03)	M12	1/2"
R2-3MB	1.5-2.5	16-14	2.5 (0.10)	3.2 (0.13)	6.6 (0.26)	14.4 (0.57)	0.8 (0.03)	M3	#5
R2-3B	1.5-2.5	16-14	2.5 (0.10)	3.2 (0.13)	8.5 (0.33)	16.8 (0.66)	0.8 (0.03)	M3	#5
R2-3.5B	1.5-2.5	16-14	2.5 (0.10)	3.7 (0.15)	6.6 (0.26)	14.4 (0.57)	0.8 (0.03)	M3.5	#6
R2-3.5LB	1.5-2.5	16-14	2.5 (0.10)	3.7 (0.15)	8.5 (0.33)	16.8 (0.66)	0.8 (0.03)	M3.5	#6
R2-4B	1.5-2.5	16-14	2.5 (0.10)	4.3 (0.17)	8.5 (0.33)	16.8 (0.66)	0.8 (0.03)	M4	#8
R2-4MB	1.5-2.5	16-14	2.5 (0.10)	4.3 (0.17)	6.6 (0.26)	14.4 (0.57)	0.8 (0.03)	M4	#8
R2-5MB	1.5-2.5	16-14	2.5 (0.10)	5.3 (0.21)	8.5 (0.33)	16.8 (0.66)	0.8 (0.03)	M5	#10
R2-5B	1.5-2.5	16-14	2.5 (0.10)	5.3 (0.21)	9.5 (0.37)	16.7 (0.66)	0.8 (0.03)	M5	#10
R2-6B	1.5-2.5	16-14	2.5 (0.10)	6.4 (0.25)	12.0 (0.47)	21.2 (0.83)	0.8 (0.03)	M6	1/4"
R2-8B	1.5-2.5	16-14	2.5 (0.10)	8.4 (0.33)	12.0 (0.47)	21.2 (0.83)	0.8 (0.03)	M8	5/16"
R2-10B	1.5-2.5	16-14	2.5 (0.10)	10.5 (0.41)	13.7 (0.54)	25.5 (1.00)	0.8 (0.03)	M10	3/8"
R2-12B	1.5-2.5	16-14	2.5 (0.10)	13.0 (0.51)	19.0 (0.75)	28.7 (1.13)	0.8 (0.03)	M12	1/2"
R3.5-4B	2.5-4.0	14-12	3.4 (0.13)	4.3 (0.17)	9.5 (0.37)	19.5 (0.77)	0.8 (0.03)	M4	#8
R3.5-5B	2.5-4.0	14-12	3.4 (0.13)	5.3 (0.21)	9.5 (0.37)	19.5 (0.77)	0.8 (0.03)	M5	#10
R5.5-3B	4.0-6.0	12-10	3.6 (0.14)	3.2 (0.13)	9.5 (0.37)	19.5 (0.77)	1.0 (0.04)	M3	#5
R5.5-3.5B	4.0-6.0	12-10	3.6 (0.14)	3.7 (0.15)	9.5 (0.37)	19.5 (0.77)	1.0 (0.04)	M3.5	#6
R5.5-4SB	4.0-6.0	12-10	3.6 (0.14)	4.3 (0.17)	7.4 (0.29)	18.5 (0.73)	1.0 (0.04)	M4	#8
R5.5-4B	4.0-6.0	12-10	3.6 (0.14)	4.3 (0.17)	9.5 (0.37)	19.5 (0.77)	1.0 (0.04)	M4	#8
R5.5-5B	4.0-6.0	12-10	3.6 (0.14)	5.3 (0.21)	9.5 (0.37)	19.5 (0.77)	1.0 (0.04)	M5	#10
R5.5-5SB	4.0-6.0	12-10	3.6 (0.14)	5.3 (0.21)	7.4 (0.29)	18.5 (0.73)	1.0 (0.04)	M5	#10
R5.5-6B	4.0-6.0	12-10	3.6 (0.14)	6.4 (0.25)	12.0 (0.47)	25.5 (1.00)	1.0 (0.04)	M6	1/4"
R5.5-8B	4.0-6.0	12-10	3.6 (0.14)	8.4 (0.33)	15.0 (0.59)	27.7 (1.09)	1.0 (0.04)	M8	5/16"
R5.5-10B	4.0-6.0	12-10	3.6 (0.14)	10.5 (0.41)	15.0 (0.59)	27.7 (1.09)	1.0 (0.04)	M10	3/8"
R5.5-12B	4.0-6.0	12-10	3.6 (0.14)	13.0 (0.51)	19.2 (0.76)	32.4 (1.28)	1.0 (0.04)	M12	1/2"
R8-4B	8.0	8	4.5 (0.18)	4.4 (0.17)	12.0 (0.47)	23.8 (0.94)	1.2 (0.05)	M4	#8
R8-S4B	8.0	8	4.5 (0.18)	4.4 (0.17)	9.5 (0.37)	22.5 (0.89)	1.2 (0.05)	M4	#8
R8-5B	8.0	8	4.8 (0.19)	5.4 (0.21)	12.0 (0.47)	22.7 (0.89)	1.2 (0.05)	M5	#10
R8-S5B	8.0	8	4.5 (0.18)	5.4 (0.21)	9.5 (0.37)	22.5 (0.89)	1.2 (0.05)	M5	#10
R8-L5B	8.0	8	4.5 (0.18)	5.4 (0.21)	15.0 (0.59)	29.6 (1.17)	1.2 (0.05)	M5	#10
R8-6B	8.0	8	4.8 (0.19)	6.4 (0.25)	12.0 (0.47)	22.7 (0.89)	1.2 (0.05)	M6	1/4"
R8-S6B	8.0	8	4.5 (0.18)	6.6 (0.26)	9.5 (0.37)	22.5 (0.89)	1.2 (0.05)	M6	1/4"
R8-L6B	8.0	8	4.5 (0.18)	6.6 (0.26)	15.0 (0.59)	29.6 (1.17)	1.2 (0.05)	M6	1/4"
R8-8B	8.0	8	4.8 (0.19)	8.6 (0.34)	14.0 (0.55)	27.0 (1.06)	1.2 (0.05)	M8	5/16"
R8-10B	8.0	8	4.5 (0.18)	10.7 (0.42)	15.0 (0.59)	29.6 (1.17)	1.2 (0.05)	M10	3/8"
R8-12B	8.0	8	4.5 (0.18)	13.2 (0.52)	20.0 (0.79)	33.5 (1.32)	1.2 (0.05)	M12	1/2"
R8-14B	8.0	8	4.5 (0.18)	15.2 (0.60)	32.0 (1.26)	50.0 (1.97)	1.2 (0.05)	M14	9/16"
R8-16B	8.0	8	4.5 (0.18)	17.2 (0.68)	32.0 (1.26)	50.0 (1.97)	1.2 (0.05)	M16	5/8"
R8-18B	8.0	8	4.5 (0.18)	19.2 (0.76)	32.0 (1.26)	50.0 (1.97)	1.2 (0.05)	M18	3/4"
R8-20B	8.0	8	4.5 (0.18)	21.2 (0.83)	32.0 (1.26)	50.0 (1.97)	1.2 (0.05)	M20	3/4"

NON-INSULATED RING TERMINALS

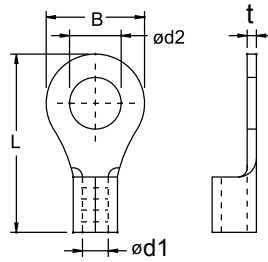
- Brazed seam protects terminal barrel from splitting during the crimping process
- Material: Copper



Part No.	Wire Range		Dimension mm (inch)					Stud Size	
	sq. mm.	AWG	d1	d2	B	L	t	mm	inch
R14-5B	14.0	6	5.8 (0.23)	5.4 (0.21)	12.0 (0.47)	29.5 (1.16)	1.5 (0.06)	M5	#10
R14-S5B	14.0	6	5.8 (0.23)	5.4 (0.21)	10.0 (0.39)	28.5 (1.12)	1.5 (0.06)	M5	#10
R14-6B	14.0	6	5.8 (0.23)	6.6 (0.26)	12.0 (0.47)	29.5 (1.16)	1.5 (0.06)	M6	1/4"
R14-S6B	14.0	6	5.8 (0.23)	6.6 (0.26)	10.0 (0.39)	28.5 (1.12)	1.5 (0.06)	M6	1/4"
R14-8B	14.0	6	5.8 (0.23)	8.6 (0.34)	16.0 (0.63)	32.8 (1.29)	1.5 (0.06)	M8	5/16"
R14-S8B	14.0	6	5.8 (0.23)	8.6 (0.34)	12.0 (0.47)	29.5 (1.16)	1.5 (0.06)	M8	5/16"
R14-10B	14.0	6	5.8 (0.23)	10.7 (0.42)	16.0 (0.63)	32.8 (1.29)	1.5 (0.06)	M10	3/8"
R14-12B	14.0	6	5.8 (0.23)	13.2 (0.52)	22.0 (0.87)	39.3 (1.55)	1.5 (0.06)	M12	1/2"
R14-14B	14.0	6	5.8 (0.23)	15.2 (0.60)	30.0 (1.18)	49.0 (1.93)	1.5 (0.06)	M14	9/16"
R14-16B	14.0	6	5.8 (0.23)	17.2 (0.68)	30.0 (1.18)	49.0 (1.93)	1.5 (0.06)	M16	5/8"
R14-18B	14.0	6	5.8 (0.23)	19.2 (0.76)	30.0 (1.18)	49.0 (1.93)	1.5 (0.06)	M18	3/4"
R14-20B	14.0	6	5.8 (0.23)	21.2 (0.83)	30.0 (1.18)	49.0 (1.93)	1.5 (0.06)	M20	3/4"
R22-5B	22.0	4	7.7 (0.30)	5.4 (0.21)	12.0 (0.47)	30.9 (1.22)	1.5 (0.06)	M5	#10
R22-S6B	22.0	4	7.7 (0.30)	6.6 (0.26)	12.0 (0.47)	30.9 (1.22)	1.8 (0.07)	M6	1/4"
R22-S8B	22.0	4	7.7 (0.30)	8.6 (0.34)	12.0 (0.47)	30.9 (1.22)	1.8 (0.07)	M8	5/16"
R22-6B	22.0	4	7.7 (0.30)	6.6 (0.26)	16.5 (0.65)	33.1 (1.30)	1.8 (0.07)	M6	1/4"
R22-8B	22.0	4	7.7 (0.30)	8.6 (0.34)	16.5 (0.65)	33.1 (1.30)	1.8 (0.07)	M8	5/16"
R22-10B	22.0	4	7.7 (0.30)	10.7 (0.42)	17.5 (0.69)	35.9 (1.41)	1.8 (0.07)	M10	3/8"
R22-12B	22.0	4	7.7 (0.30)	13.2 (0.52)	22.0 (0.87)	42.5 (1.67)	1.8 (0.07)	M12	1/2"
R22-14B	22.0	4	7.7 (0.30)	15.2 (0.60)	30.0 (1.18)	51.5 (2.03)	1.8 (0.07)	M14	9/16"
R22-16B	22.0	4	7.7 (0.30)	17.2 (0.68)	30.0 (1.18)	51.5 (2.03)	1.8 (0.07)	M16	5/8"
R22-18B	22.0	4	7.7 (0.30)	19.2 (0.76)	30.0 (1.18)	51.5 (2.03)	1.8 (0.07)	M18	3/4"
R22-20B	22.0	4	7.7 (0.30)	21.2 (0.83)	30.0 (1.18)	51.5 (2.03)	1.8 (0.07)	M20	3/4"
R38-S5B	38.0	2	9.4 (0.37)	5.4 (0.21)	15.5 (0.61)	36.7 (1.44)	1.8 (0.07)	M5	#10
R38-S6B	38.0	2	9.4 (0.37)	6.6 (0.26)	15.5 (0.61)	36.7 (1.44)	1.8 (0.07)	M6	1/4"
R38-S8B	38.0	2	9.4 (0.37)	8.6 (0.34)	15.5 (0.61)	36.7 (1.44)	1.8 (0.07)	M8	5/16"
R38-S10B	38.0	2	9.4 (0.37)	10.7 (0.42)	15.5 (0.61)	36.7 (1.44)	1.8 (0.07)	M10	3/8"
R38-5B	38.0	2	9.4 (0.37)	5.4 (0.21)	22.0 (0.87)	42.5 (1.67)	1.8 (0.07)	M5	#10
R38-6B	38.0	2	9.4 (0.37)	6.6 (0.26)	22.0 (0.87)	42.5 (1.67)	1.8 (0.07)	M6	1/4"
R38-8B	38.0	2	9.4 (0.37)	8.6 (0.34)	22.0 (0.87)	42.5 (1.67)	1.8 (0.07)	M8	5/16"
R38-10B	38.0	2	9.4 (0.37)	10.7 (0.42)	22.0 (0.87)	42.5 (1.67)	1.8 (0.07)	M10	3/8"
R38-12B	38.0	2	9.4 (0.37)	13.2 (0.52)	22.0 (0.87)	42.5 (1.67)	1.8 (0.07)	M12	1/2"
R38-14B	38.0	2	9.4 (0.37)	15.2 (0.60)	30.0 (1.18)	52.0 (2.05)	1.8 (0.07)	M14	9/16"
R38-16B	38.0	2	9.4 (0.37)	17.2 (0.68)	30.0 (1.18)	52.0 (2.05)	1.8 (0.07)	M16	5/8"
R38-18B	38.0	2	9.4 (0.37)	19.2 (0.76)	30.0 (1.18)	52.0 (2.05)	1.8 (0.07)	M18	3/4"
R38-20B	38.0	2	9.4 (0.37)	21.2 (0.83)	30.0 (1.18)	52.0 (2.05)	1.8 (0.07)	M20	3/4"
R60-S6B	60.0	1/0	11.4 (0.45)	6.6 (0.26)	19.0 (0.75)	47.5 (1.87)	1.9 (0.07)	M6	1/4"
R60-S8B	60.0	1/0	11.4 (0.45)	8.6 (0.34)	19.0 (0.75)	47.5 (1.87)	1.9 (0.07)	M8	5/16"
R60-S10B	60.0	1/0	11.4 (0.45)	10.7 (0.42)	19.0 (0.75)	47.5 (1.87)	1.9 (0.07)	M10	3/8"
R60-6B	60.0	1/0	11.4 (0.45)	6.6 (0.26)	22.0 (0.87)	49.0 (1.93)	1.9 (0.07)	M6	1/4"
R60-8B	60.0	1/0	11.4 (0.45)	8.6 (0.34)	22.0 (0.87)	49.0 (1.93)	1.9 (0.07)	M8	5/16"
R60-10B	60.0	1/0	11.4 (0.45)	10.7 (0.42)	22.0 (0.87)	49.0 (1.93)	1.9 (0.07)	M10	3/8"
R60-12B	60.0	1/0	11.4 (0.45)	13.2 (0.52)	22.0 (0.87)	49.0 (1.93)	1.9 (0.07)	M12	1/2"
R60-14B	60.0	1/0	11.4 (0.45)	15.2 (0.60)	32.0 (1.26)	57.5 (2.26)	1.9 (0.07)	M14	9/16"
R60-16B	60.0	1/0	11.4 (0.45)	17.2 (0.68)	32.0 (1.26)	57.5 (2.26)	1.9 (0.07)	M16	5/8"
R60-18B	60.0	1/0	11.4 (0.45)	19.2 (0.76)	32.0 (1.26)	57.5 (2.26)	1.9 (0.07)	M18	3/4"
R60-20B	60.0	1/0	11.4 (0.45)	21.2 (0.83)	32.0 (1.26)	57.5 (2.26)	1.9 (0.07)	M20	3/4"
R60-22B	60.0	1/0	11.4 (0.45)	23.2 (0.91)	32.0 (1.26)	57.5 (2.26)	1.9 (0.07)	M22	7/8"

NON-INSULATED RING TERMINALS

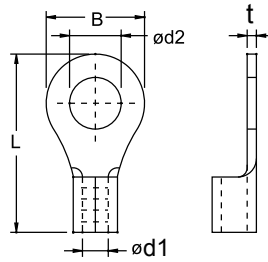
- Brazed seam protects terminal barrel from splitting during the crimping process
- Material: Copper



Part No.	Wire Range		Dimension mm (inch)					Stud Size	
	sq. mm.	AWG	d1	d2	B	L	t	mm	inch
R70-6B	70.0	2/0	13.5 (0.53)	6.6 (0.26)	27.0 (1.06)	49.0 (1.93)	2.0 (0.08)	M6	1/4"
R70-8B	70.0	2/0	13.5 (0.53)	8.6 (0.34)	27.0 (1.06)	49.0 (1.93)	2.0 (0.08)	M8	5/16"
R70-10B	70.0	2/0	13.5 (0.53)	10.7 (0.42)	27.0 (1.06)	49.0 (1.93)	2.0 (0.08)	M10	3/8"
R70-12B	70.0	2/0	13.5 (0.53)	13.2 (0.52)	27.0 (1.06)	49.0 (1.93)	2.0 (0.08)	M12	1/2"
R70-14B	70.0	2/0	13.5 (0.53)	15.2 (0.60)	27.0 (1.06)	53.5 (2.11)	2.0 (0.08)	M14	9/16"
R70-16B	70.0	2/0	13.5 (0.53)	17.2 (0.68)	27.0 (1.06)	53.5 (2.11)	2.0 (0.08)	M16	5/8"
R80-6B	80.0	3/0	14.5 (0.57)	6.6 (0.26)	27.0 (1.06)	53.0 (2.09)	2.3 (0.09)	M6	1/4"
R80-8B	80.0	3/0	14.5 (0.57)	8.6 (0.34)	27.0 (1.06)	53.0 (2.09)	2.3 (0.09)	M8	5/16"
R80-10B	80.0	3/0	14.5 (0.57)	10.7 (0.42)	27.0 (1.06)	53.0 (2.09)	2.3 (0.09)	M10	3/8"
R80-12B	80.0	3/0	14.5 (0.57)	13.2 (0.52)	27.0 (1.06)	53.0 (2.09)	2.3 (0.09)	M12	1/2"
R80-S14B	80.0	3/0	14.5 (0.57)	15.2 (0.60)	27.0 (1.06)	53.0 (2.09)	2.3 (0.09)	M14	9/16"
R80-L6B	80.0	3/0	14.5 (0.57)	6.6 (0.26)	32.0 (1.26)	63.0 (2.48)	2.3 (0.09)	M6	1/4"
R80-L8B	80.0	3/0	14.5 (0.57)	8.6 (0.34)	32.0 (1.26)	63.0 (2.48)	2.3 (0.09)	M8	5/16"
R80-L10B	80.0	3/0	14.5 (0.57)	10.7 (0.42)	32.0 (1.26)	63.0 (2.48)	2.3 (0.09)	M10	3/8"
R80-L12B	80.0	3/0	14.5 (0.57)	13.2 (0.52)	32.0 (1.26)	63.0 (2.48)	2.3 (0.09)	M12	1/2"
R80-14B	80.0	3/0	14.5 (0.57)	15.2 (0.60)	32.0 (1.26)	63.0 (2.48)	2.3 (0.09)	M14	9/16"
R80-16B	80.0	3/0	14.5 (0.57)	17.2 (0.68)	32.0 (1.26)	63.0 (2.48)	2.3 (0.09)	M16	5/8"
R80-18B	80.0	3/0	14.5 (0.57)	19.2 (0.76)	32.0 (1.26)	63.0 (2.48)	2.3 (0.09)	M18	3/4"
R80-20B	80.0	3/0	14.5 (0.57)	21.2 (0.83)	32.0 (1.26)	63.0 (2.48)	2.3 (0.09)	M20	3/4"
R80-22B	80.0	3/0	14.5 (0.57)	23.2 (0.91)	32.0 (1.26)	63.0 (2.48)	2.3 (0.09)	M22	7/8"
R100-6B	100.0	4/0	16.4 (0.65)	6.6 (0.26)	28.5 (1.12)	55.5 (2.19)	2.6 (0.10)	M6	1/4"
R100-8B	100.0	4/0	16.4 (0.65)	8.6 (0.34)	28.5 (1.12)	55.5 (2.19)	2.6 (0.10)	M8	5/16"
R100-10B	100.0	4/0	16.4 (0.65)	10.7 (0.42)	28.5 (1.12)	55.5 (2.19)	2.6 (0.10)	M10	3/8"
R100-12B	100.0	4/0	16.4 (0.65)	13.2 (0.52)	28.5 (1.12)	55.5 (2.19)	2.6 (0.10)	M12	1/2"
R100-S14B	100.0	4/0	16.4 (0.65)	15.2 (0.60)	28.5 (1.12)	55.5 (2.19)	2.6 (0.10)	M14	9/16"
R100-L6B	100.0	4/0	16.4 (0.65)	6.6 (0.26)	32.0 (1.26)	69.0 (2.72)	2.6 (0.10)	M6	1/4"
R100-L8B	100.0	4/0	16.4 (0.65)	8.6 (0.34)	32.0 (1.26)	69.0 (2.72)	2.6 (0.10)	M8	5/16"
R100-L10B	100.0	4/0	16.4 (0.65)	10.7 (0.42)	32.0 (1.26)	69.0 (2.72)	2.6 (0.10)	M10	3/8"
R100-L12B	100.0	4/0	16.4 (0.65)	13.2 (0.52)	32.0 (1.26)	69.0 (2.72)	2.6 (0.10)	M12	1/2"
R100-14B	100.0	4/0	16.4 (0.65)	15.2 (0.60)	32.0 (1.26)	69.0 (2.72)	2.6 (0.10)	M14	9/16"
R100-16B	100.0	4/0	16.4 (0.65)	17.2 (0.68)	32.0 (1.26)	69.0 (2.72)	2.6 (0.10)	M16	5/8"
R100-18B	100.0	4/0	16.4 (0.65)	19.2 (0.76)	32.0 (1.26)	69.0 (2.72)	2.6 (0.10)	M18	3/4"
R100-20B	100.0	4/0	16.4 (0.65)	21.2 (0.83)	32.0 (1.26)	69.0 (2.72)	2.6 (0.10)	M20	3/4"
R100-22B	100.0	4/0	16.4 (0.65)	23.2 (0.91)	32.0 (1.26)	69.0 (2.72)	2.6 (0.10)	M22	7/8"
R150-6B	150.0	250/300	19.5 (0.77)	6.6 (0.26)	36.0 (1.42)	67.0 (2.64)	3.2 (0.13)	M6	1/4"
R150-8B	150.0	250/300	19.5 (0.77)	8.6 (0.34)	36.0 (1.42)	67.0 (2.64)	3.2 (0.13)	M8	5/16"
R150-10B	150.0	250/300	19.5 (0.77)	10.7 (0.42)	36.0 (1.42)	67.0 (2.64)	3.2 (0.13)	M10	3/8"
R150-12B	150.0	250/300	19.5 (0.77)	13.2 (0.52)	36.0 (1.42)	67.0 (2.64)	3.2 (0.13)	M12	1/2"
R150-S14B	150.0	250/300	19.5 (0.77)	15.2 (0.60)	36.0 (1.42)	67.0 (2.64)	3.2 (0.13)	M14	9/16"
R150-S16B	150.0	250/300	19.5 (0.77)	17.2 (0.68)	36.0 (1.42)	67.0 (2.64)	3.2 (0.13)	M16	5/8"
R150-L6B	150.0	250/300	19.5 (0.77)	6.6 (0.26)	36.0 (1.42)	75.0 (2.95)	3.2 (0.13)	M6	1/4"
R150-L8B	150.0	250/300	19.5 (0.77)	8.6 (0.34)	36.0 (1.42)	75.0 (2.95)	3.2 (0.13)	M8	5/16"
R150-L10B	150.0	250/300	19.5 (0.77)	10.7 (0.42)	36.0 (1.42)	75.0 (2.95)	3.2 (0.13)	M10	3/8"
R150-L12B	150.0	250/300	19.5 (0.77)	13.2 (0.52)	36.0 (1.42)	75.0 (2.95)	3.2 (0.13)	M12	1/2"
R150-14B	150.0	250/300	19.5 (0.77)	15.2 (0.60)	36.0 (1.42)	75.0 (2.95)	3.2 (0.13)	M14	9/16"
R150-16B	150.0	250/300	19.5 (0.77)	17.2 (0.68)	36.0 (1.42)	75.0 (2.95)	3.2 (0.13)	M16	5/8"
R150-18B	150.0	250/300	19.5 (0.77)	19.2 (0.76)	36.0 (1.42)	75.0 (2.95)	3.2 (0.13)	M18	3/4"
R150-20B	150.0	250/300	19.5 (0.77)	21.2 (0.83)	36.0 (1.42)	75.0 (2.95)	3.2 (0.13)	M20	3/4"
R150-22B	150.0	250/300	19.5 (0.77)	23.2 (0.91)	36.0 (1.42)	75.0 (2.95)	3.2 (0.13)	M22	7/8"

NON-INSULATED RING TERMINALS

- Brazed seam protects terminal barrel from splitting during the crimping process
- Material: Copper



Part No.	Wire Range		Dimension mm (inch)					Stud Size	
	sq. mm.	AWG	d1	d2	B	L	t	mm	inch
R180-8B	180.0	300/350	22.0 (0.87)	8.6 (0.34)	40.0 (1.57)	70.0 (2.76)	3.2 (0.13)	M8	5/16"
R180-10B	180.0	300/350	22.0 (0.87)	10.7 (0.42)	40.0 (1.57)	70.0 (2.76)	3.2 (0.13)	M10	3/8"
R180-12B	180.0	300/350	22.0 (0.87)	13.2 (0.52)	40.0 (1.57)	70.0 (2.76)	3.2 (0.13)	M12	1/2"
R180-14B	180.0	300/350	22.0 (0.87)	15.2 (0.60)	40.0 (1.57)	70.0 (2.76)	3.2 (0.13)	M14	9/16"
R180-S16B	180.0	300/350	22.0 (0.87)	17.2 (0.68)	40.0 (1.57)	70.0 (2.76)	3.2 (0.13)	M16	5/8"
R180-L8B	180.0	300/350	22.0 (0.87)	8.6 (0.34)	40.0 (1.57)	90.0 (3.54)	3.2 (0.13)	M8	5/16"
R180-L10B	180.0	300/350	22.0 (0.87)	10.7 (0.42)	40.0 (1.57)	90.0 (3.54)	3.2 (0.13)	M10	3/8"
R180-L12B	180.0	300/350	22.0 (0.87)	13.2 (0.52)	40.0 (1.57)	90.0 (3.54)	3.2 (0.13)	M12	1/2"
R180-L14B	180.0	300/350	22.0 (0.87)	15.2 (0.60)	40.0 (1.57)	90.0 (3.54)	3.2 (0.13)	M14	9/16"
R180-16B	180.0	300/350	22.0 (0.87)	17.2 (0.68)	40.0 (1.57)	90.0 (3.54)	3.2 (0.13)	M16	5/8"
R180-18B	180.0	300/350	22.0 (0.87)	19.2 (0.76)	40.0 (1.57)	90.0 (3.54)	3.2 (0.13)	M18	3/4"
R180-20B	180.0	300/350	22.0 (0.87)	21.2 (0.83)	40.0 (1.57)	90.0 (3.54)	3.2 (0.13)	M20	3/4"
R180-22B	180.0	300/350	22.0 (0.87)	23.2 (0.91)	40.0 (1.57)	90.0 (3.54)	3.2 (0.13)	M22	7/8"
R180-24B	180.0	300/350	22.0 (0.87)	25.2 (0.99)	40.0 (1.57)	90.0 (3.54)	3.2 (0.13)	M24	7/8"
R180-27B	180.0	300/350	22.0 (0.87)	28.2 (1.11)	40.0 (1.57)	90.0 (3.54)	3.2 (0.13)	M27	1"
R200-8B	200.0	400/500	24.0 (0.94)	8.6 (0.34)	44.0 (1.73)	79.0 (3.11)	4.0 (0.16)	M8	5/16"
R200-10B	200.0	400/500	24.0 (0.94)	10.7 (0.42)	44.0 (1.73)	79.0 (3.11)	4.0 (0.16)	M10	3/8"
R200-12B	200.0	400/500	24.0 (0.94)	13.2 (0.52)	44.0 (1.73)	79.0 (3.11)	4.0 (0.16)	M12	1/2"
R200-14B	200.0	400/500	24.0 (0.94)	15.2 (0.60)	44.0 (1.73)	79.0 (3.11)	4.0 (0.16)	M14	9/16"
R200-S16B	200.0	400/500	24.0 (0.94)	17.2 (0.68)	44.0 (1.73)	79.0 (3.11)	4.0 (0.16)	M16	5/8"
R200-S18B	200.0	400/500	24.0 (0.94)	19.2 (0.76)	44.0 (1.73)	79.0 (3.11)	4.0 (0.16)	M18	3/4"
R200-L8B	200.0	400/500	24.0 (0.94)	8.6 (0.34)	44.0 (1.73)	91.0 (3.58)	4.0 (0.16)	M8	5/16"
R200-L10B	200.0	400/500	24.0 (0.94)	10.7 (0.42)	44.0 (1.73)	91.0 (3.58)	4.0 (0.16)	M10	3/8"
R200-L12B	200.0	400/500	24.0 (0.94)	13.2 (0.52)	44.0 (1.73)	91.0 (3.58)	4.0 (0.16)	M12	1/2"
R200-L14B	200.0	400/500	24.0 (0.94)	15.2 (0.60)	44.0 (1.73)	91.0 (3.58)	4.0 (0.16)	M14	9/16"
R200-16B	200.0	400/500	24.0 (0.94)	17.2 (0.68)	44.0 (1.73)	91.0 (3.58)	4.0 (0.16)	M16	5/8"
R200-18B	200.0	400/500	24.0 (0.94)	19.2 (0.76)	44.0 (1.73)	91.0 (3.58)	4.0 (0.16)	M18	3/4"
R200-20B	200.0	400/500	24.0 (0.94)	21.2 (0.83)	44.0 (1.73)	91.0 (3.58)	4.0 (0.16)	M20	3/4"
R200-22B	200.0	400/500	24.0 (0.94)	23.2 (0.91)	44.0 (1.73)	91.0 (3.58)	4.0 (0.16)	M22	7/8"
R200-24B	200.0	400/500	24.0 (0.94)	25.2 (0.99)	44.0 (1.73)	91.0 (3.58)	4.0 (0.16)	M24	7/8"
R200-27B	200.0	400/500	24.0 (0.94)	28.2 (1.11)	44.0 (1.73)	91.0 (3.58)	4.0 (0.16)	M27	1"
R325-8B	325.0	500/600	28.0 (1.10)	8.6 (0.34)	50.0 (1.97)	92.0 (3.62)	4.5 (0.18)	M8	5/16"
R325-10B	325.0	500/600	28.0 (1.10)	10.7 (0.42)	50.0 (1.97)	92.0 (3.62)	4.5 (0.18)	M10	3/8"
R325-12B	325.0	500/600	28.0 (1.10)	13.2 (0.52)	50.0 (1.97)	92.0 (3.62)	4.5 (0.18)	M12	1/2"
R325-14B	325.0	500/600	28.0 (1.10)	15.2 (0.60)	50.0 (1.97)	92.0 (3.62)	4.5 (0.18)	M14	9/16"
R325-16B	325.0	500/600	28.0 (1.10)	17.2 (0.68)	50.0 (1.97)	92.0 (3.62)	4.5 (0.18)	M16	5/8"
R325-S18B	325.0	500/600	28.0 (1.10)	19.2 (0.76)	50.0 (1.97)	92.0 (3.62)	4.5 (0.18)	M18	3/4"
R325-S20B	325.0	500/600	28.0 (1.10)	21.2 (0.83)	50.0 (1.97)	92.0 (3.62)	4.5 (0.18)	M20	3/4"
R325-L8B	325.0	500/600	28.0 (1.10)	8.6 (0.34)	50.0 (1.97)	98.0 (3.86)	4.5 (0.18)	M8	5/16"
R325-L10B	325.0	500/600	28.0 (1.10)	10.7 (0.42)	50.0 (1.97)	98.0 (3.86)	4.5 (0.18)	M10	3/8"
R325-L12B	325.0	500/600	28.0 (1.10)	13.2 (0.52)	50.0 (1.97)	98.0 (3.86)	4.5 (0.18)	M12	1/2"
R325-L14B	325.0	500/600	28.0 (1.10)	15.2 (0.60)	50.0 (1.97)	98.0 (3.86)	4.5 (0.18)	M14	9/16"
R325-L16B	325.0	500/600	28.0 (1.10)	17.2 (0.68)	50.0 (1.97)	98.0 (3.86)	4.5 (0.18)	M16	5/8"
R325-18B	325.0	500/600	28.0 (1.10)	19.2 (0.76)	50.0 (1.97)	98.0 (3.86)	4.5 (0.18)	M18	3/4"
R325-20B	325.0	500/600	28.0 (1.10)	21.2 (0.83)	50.0 (1.97)	98.0 (3.86)	4.5 (0.18)	M20	3/4"
R325-22B	325.0	500/600	28.0 (1.10)	23.2 (0.91)	50.0 (1.97)	98.0 (3.86)	4.5 (0.18)	M22	7/8"
R325-24B	325.0	500/600	28.0 (1.10)	25.2 (0.99)	50.0 (1.97)	98.0 (3.86)	4.5 (0.18)	M24	7/8"
R325-27B	325.0	500/600	28.0 (1.10)	28.2 (1.11)	50.0 (1.97)	98.0 (3.86)	4.5 (0.18)	M27	1"