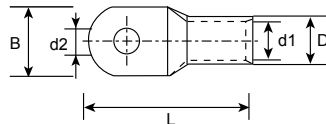


COPPER/CABLE LUGS

- Made from superior grade of copper to ensure most efficient electrical conductivity
- Surface is electrolytically tin-plated to avoid oxidation
- Comply with DIN 46234 for wire containment
- Copper tube is special designed to reach the most strength to resist vibration and pull out
- The length of lug barrel is designed to allow easy and accurate crimping operation
- Material: Copper



| Part No. | Wire Range | | Dimension mm (inch) | | | | |
|----------|------------|---------|---------------------|-------------|-------------|-------------|--------------|
| | sq. mm. | AWG | d1 | d2 | D | B | L |
| SC10-6 | 10.0 | 8 | 5.0 (0.20) | 6.4 (0.25) | 7.0 (0.28) | 12.4 (0.49) | 27.0 (1.06) |
| SC10-8 | 10.0 | 8 | 5.0 (0.20) | 8.4 (0.33) | 7.0 (0.28) | 12.4 (0.49) | 27.0 (1.06) |
| SC16-8 | 16.0 | 6 | 5.8 (0.23) | 8.4 (0.33) | 7.8 (0.31) | 12.4 (0.49) | 31.0 (1.22) |
| SC25-8 | 25.0 | 4 | 7.5 (0.30) | 8.4 (0.33) | 9.5 (0.37) | 15.5 (0.61) | 34.0 (1.34) |
| SC35-8 | 35.0 | 2 | 8.6 (0.34) | 8.4 (0.33) | 11.4 (0.45) | 16.5 (0.65) | 38.0 (1.50) |
| SC35-10 | 35.0 | 2 | 8.6 (0.34) | 10.5 (0.41) | 11.4 (0.45) | 17.5 (0.69) | 40.5 (1.59) |
| SC50-8 | 50.0 | 1 | 9.6 (0.38) | 8.4 (0.33) | 12.6 (0.50) | 18.0 (0.71) | 43.5 (1.71) |
| SC50-10 | 50.0 | 1 | 9.6 (0.38) | 10.5 (0.41) | 12.6 (0.50) | 18.0 (0.71) | 43.5 (1.71) |
| SC50-12 | 50.0 | 1 | 9.6 (0.38) | 13.0 (0.51) | 12.6 (0.50) | 18.0 (0.71) | 43.5 (1.71) |
| SC70-10 | 70.0 | 2/0 | 12.0 (0.47) | 10.5 (0.41) | 15.0 (0.59) | 21.8 (0.86) | 50.0 (1.97) |
| SC95-10 | 95.0 | 3/0 | 13.5 (0.53) | 10.5 (0.41) | 17.4 (0.69) | 25.0 (0.98) | 55.0 (2.17) |
| SC95-12 | 95.0 | 3/0 | 13.5 (0.53) | 13.0 (0.51) | 17.4 (0.69) | 25.0 (0.98) | 55.0 (2.17) |
| SC120-10 | 120.0 | 4/0 | 15.0 (0.59) | 10.5 (0.41) | 19.8 (0.78) | 28.4 (1.12) | 60.0 (2.36) |
| SC120-12 | 120.0 | 4/0 | 15.0 (0.59) | 13.0 (0.51) | 19.8 (0.78) | 28.4 (1.12) | 60.0 (2.36) |
| SC120-14 | 120.0 | 4/0 | 15.0 (0.59) | 15.0 (0.59) | 19.8 (0.78) | 28.4 (1.12) | 64.0 (2.52) |
| SC150-12 | 150.0 | 250/300 | 16.5 (0.65) | 13.0 (0.51) | 21.2 (0.83) | 30.5 (1.20) | 69.0 (2.72) |
| SC150-14 | 150.0 | 250/300 | 16.5 (0.65) | 15.0 (0.59) | 21.2 (0.83) | 30.5 (1.20) | 69.0 (2.72) |
| SC150-16 | 150.0 | 250/300 | 16.5 (0.65) | 17.0 (0.67) | 21.2 (0.83) | 30.5 (1.20) | 69.0 (2.72) |
| SC185-12 | 185.0 | 300/350 | 18.5 (0.73) | 15.0 (0.59) | 23.5 (0.93) | 34.0 (1.34) | 78.0 (3.07) |
| SC185-14 | 185.0 | 300/350 | 18.5 (0.73) | 15.0 (0.59) | 23.5 (0.93) | 34.0 (1.34) | 78.0 (3.07) |
| SC185-16 | 185.0 | 300/350 | 18.5 (0.73) | 17.0 (0.67) | 23.5 (0.93) | 34.0 (1.34) | 64.0 (2.52) |
| SC240-12 | 240.0 | 400/450 | 21.5 (0.85) | 13.0 (0.51) | 26.5 (1.04) | 39.0 (1.54) | 92.0 (3.62) |
| SC240-14 | 240.0 | 400/450 | 21.5 (0.85) | 15.0 (0.59) | 26.5 (1.04) | 39.0 (1.54) | 92.0 (3.62) |
| SC240-16 | 240.0 | 400/450 | 21.5 (0.85) | 17.0 (0.67) | 26.5 (1.04) | 39.0 (1.54) | 92.0 (3.62) |
| SC300-12 | 300.0 | 500 | 23.5 (0.93) | 13.0 (0.51) | 30.0 (1.18) | 43.0 (1.69) | 101.0 (3.98) |
| SC300-14 | 300.0 | 500 | 23.5 (0.93) | 15.0 (0.59) | 30.0 (1.18) | 43.0 (1.69) | 101.0 (3.98) |
| SC300-16 | 300.0 | 500 | 23.5 (0.93) | 17.0 (0.67) | 30.0 (1.18) | 43.0 (1.69) | 101.0 (3.98) |