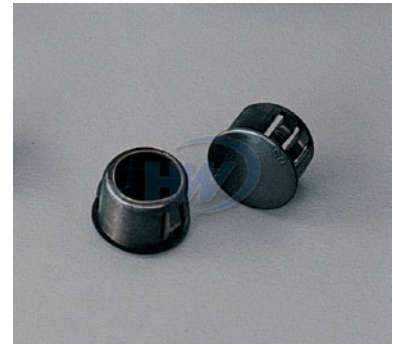
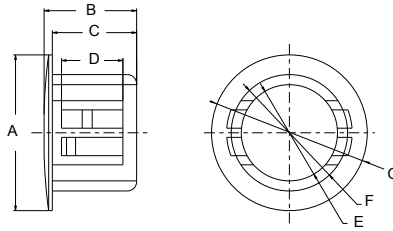


HOLE PLUGS

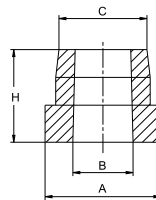
- Hole in chassis : 12.7~13 mm
- Easy installation, no tool is required
- Ideal for closing panel cavity
- Material: Polyamide 6,6, UL94V-2
- Color: Black



Part No.	A mm (inch)	B mm (inch)	C mm (inch)	D mm (inch)	E mm (inch)	F mm (inch)	G mm (inch)
M-13	ø17.0 (0.67)	10.1 (0.40)	9.2 (0.36)	6.7 (0.26)	ø10.5 (0.41)	ø12.7 (0.50)	ø14.6 (0.57)

BUSHINGS

- Application for lighting and electric equipment
- Protect electrical cable against rough hole edges
- Material: Polyamide 6,6, UL94V-2
- Color: Black



Part No.	A mm (inch)	B mm (inch)	C mm (inch)	H mm (inch)
FO-31	ø12.3 (0.48)	ø7.1 (0.28)	ø9.1 (0.36)	5.9 (0.23)
FO-45	ø12.4 (0.49)	ø6.5 (0.26)	ø9.4 (0.37)	9.8 (0.39)

EXTRUDED GROMMETING

- Applied to the panel edge easily without the need for adhesives
- The close-fitting profile provides effective protection for cables by preventing any chafing
- Material: PE
- Color: Natural



Part No.	Duct Dia. mm (inch)	Panel Thickness mm (inch)
GMB-10	1.0 (0.04)	below 1.0 (0.04)
GMB-16	1.6 (0.06)	1.0~1.6 (0.04~0.06)
GMB-20	2.0 (0.08)	1.6~2.0 (0.06~0.08)
GMB-24	2.4 (0.09)	2.0~2.4 (0.08~0.09)
GMB-32	3.2 (0.13)	2.4~3.2 (0.09~0.13)
GMB-45	4.5 (0.18)	3.2~4.5 (0.13~0.18)

