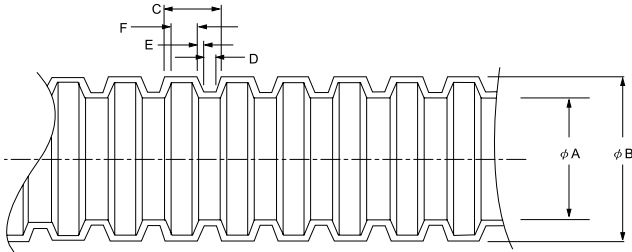


PA FLEXIBLE CONDUITS

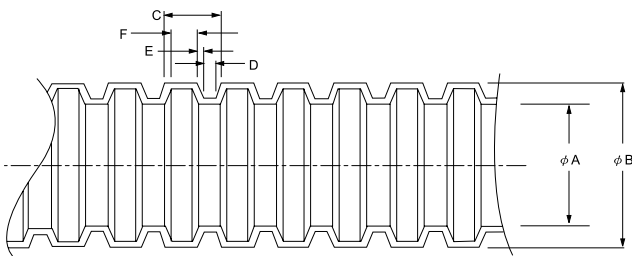
- Applicable on electrical, machinery, and building harness wiring
- Flexibility for installation while providing protection to cables
- Fluid resistance
- Material: Polyamide 6, UL94V-2
- Color: Black



Part No.	Nominal Dimension		In-Diameter A mm (inch)	Outer-Diameter B mm (inch)	C mm (inch)	D mm (inch)	E mm (inch)	F mm (inch)
	mm	inch						
NFC-07	6.4	1/4"	ø6.8±0.4 (0.27±0.02)	ø10.0±0.4 (0.39±0.02)	2.7 (0.11)	0.6 (0.02)	0.3 (0.01)	1.5 (0.06)
NFC-10	7.9	5/16"	ø9.6±0.4 (0.38±0.02)	ø13.0±0.4 (0.51±0.02)	2.9 (0.12)	0.6 (0.02)	0.3 (0.01)	1.7 (0.07)
NFC-12	9.5	3/8"	ø12.0±0.4 (0.47±0.02)	ø15.8±0.4 (0.62±0.02)	3.2 (0.13)	0.7 (0.03)	0.3 (0.01)	1.9 (0.07)
NFC-17	12.7	1/2"	ø16.2±0.4 (0.64±0.02)	ø21.2±0.4 (0.83±0.02)	3.5 (0.14)	0.6 (0.02)	0.4 (0.02)	2.1 (0.08)
NFC-23	19.1	3/4"	ø21.9±0.4 (0.86±0.02)	ø28.5±0.4 (1.12±0.02)	4.8 (0.19)	0.8 (0.03)	0.5 (0.02)	3.0 (0.12)
NFC-28	25.4	1"	ø27.6±0.4 (1.09±0.02)	ø34.5±0.4 (1.36±0.02)	4.8 (0.19)	0.9 (0.03)	0.6 (0.02)	2.7 (0.11)
NFC-36	31.8	1 1/4"	ø36.0±0.4 (1.42±0.02)	ø42.5±0.4 (1.67±0.02)	6.4 (0.25)	1.2 (0.05)	0.8 (0.03)	3.7 (0.15)
NFC-48	50.8	2"	ø47.0±0.4 (1.85±0.02)	ø54.5±0.4 (2.15±0.02)	6.4 (0.25)	1.1 (0.04)	0.8 (0.03)	3.8 (0.15)

PE FLEXIBLE CONDUITS

- Applicable on electrical, machinery, and building harness wiring
- Flexibility for installation while providing protection to cables
- Fluid resistance
- Material: PE
- Color: Black, other colors are also available



Part No.	Nominal Dimension		In-Diameter A mm (inch)	Outer-Diameter B mm (inch)	C mm (inch)	D mm (inch)	E mm (inch)	F mm (inch)
	mm	inch						
EFC-07	6.4	1/4"	ø6.8±0.4 (0.27±0.02)	ø10.0±0.4 (0.39±0.02)	2.7 (0.11)	0.6 (0.02)	0.3 (0.01)	1.5 (0.06)
EFC-10	7.9	5/16"	ø9.6±0.4 (0.38±0.02)	ø13.0±0.4 (0.51±0.02)	2.9 (0.12)	0.6 (0.02)	0.3 (0.01)	1.7 (0.07)
EFC-12	9.5	3/8"	ø12.0±0.4 (0.47±0.02)	ø15.8±0.4 (0.62±0.02)	3.2 (0.13)	0.7 (0.03)	0.3 (0.01)	1.9 (0.07)
EFC-17	12.7	1/2"	ø16.2±0.4 (0.64±0.02)	ø21.2±0.4 (0.83±0.02)	3.5 (0.14)	0.6 (0.02)	0.4 (0.02)	2.1 (0.08)
EFC-23	19.1	3/4"	ø21.9±0.4 (0.86±0.02)	ø28.5±0.4 (1.12±0.02)	4.8 (0.19)	0.8 (0.03)	0.5 (0.02)	3.0 (0.12)
EFC-28	25.4	1"	ø27.6±0.4 (1.09±0.02)	ø34.5±0.4 (1.36±0.02)	4.8 (0.19)	0.9 (0.03)	0.6 (0.02)	2.7 (0.11)
EFC-36	31.8	1 1/4"	ø36.0±0.4 (1.42±0.02)	ø42.5±0.4 (1.67±0.02)	6.4 (0.25)	1.2 (0.05)	0.8 (0.03)	3.7 (0.15)
EFC-48	50.8	2"	ø47.0±0.4 (1.85±0.02)	ø54.5±0.4 (2.15±0.02)	6.4 (0.25)	1.1 (0.04)	0.8 (0.03)	3.8 (0.15)