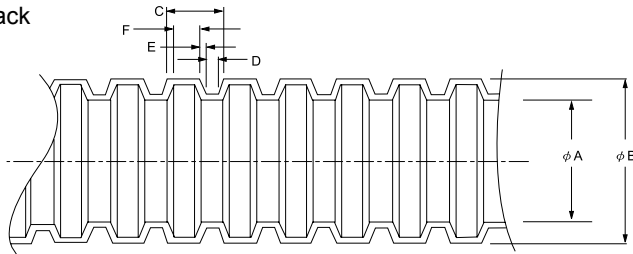


## PP FLEXIBLE CONDUITS

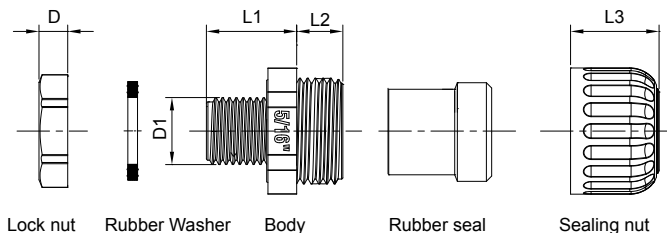
- Applicable on electrical, machinery, and building harness wiring
- Flexibility for installation while providing protection to cables
- Fluid resistance
- Cut open products are also available
- Material: PP
- Color: Black



Part No.	Nominal Dimension		In-Diameter A mm (inch)	Outer-Diameter B mm (inch)	C mm (inch)	D mm (inch)	E mm (inch)	F mm (inch)
	mm	inch						
PFC-07	6.4	1/4"	ø6.8±0.4 (0.27±0.02)	ø10.0±0.4 (0.39±0.02)	2.7 (0.11)	0.6 (0.02)	0.3 (0.01)	1.5 (0.06)
PFC-10	7.9	5/16"	ø9.6±0.4 (0.38±0.02)	ø13.0±0.4 (0.51±0.02)	2.9 (0.12)	0.6 (0.02)	0.3 (0.01)	1.7 (0.07)
PFC-12	9.5	3/8"	ø12.0±0.4 (0.47±0.02)	ø15.8±0.4 (0.62±0.02)	3.2 (0.13)	0.7 (0.03)	0.3 (0.01)	1.9 (0.07)
PFC-17	12.7	1/2"	ø16.2±0.4 (0.64±0.02)	ø21.2±0.4 (0.83±0.02)	3.5 (0.14)	0.6 (0.02)	0.4 (0.02)	2.1 (0.08)
PFC-23	19.1	3/4"	ø21.9±0.4 (0.86±0.02)	ø28.5±0.4 (1.12±0.02)	4.8 (0.19)	0.8 (0.03)	0.5 (0.02)	3.0 (0.12)
PFC-28	25.4	1"	ø27.6±0.4 (1.09±0.02)	ø34.5±0.4 (1.36±0.02)	4.8 (0.19)	0.9 (0.03)	0.6 (0.02)	2.7 (0.11)
PFC-36	31.8	1 1/4"	ø36.0±0.4 (1.42±0.02)	ø42.5±0.4 (1.67±0.02)	6.4 (0.25)	1.2 (0.05)	0.8 (0.03)	3.7 (0.15)
PFC-48	50.8	2"	ø47.0±0.4 (1.85±0.02)	ø54.5±0.4 (2.15±0.02)	6.4 (0.25)	1.1 (0.04)	0.8 (0.03)	3.8 (0.15)

## FIVE-PIECE CONDUIT ADAPTORS

- Insert conduit into claw and screw in the sealing nut for fastening, then insert the body into the board and fix with lock nut
- Applied without tools make work more efficient
- Suitable for fixing wires of machines, mechanical control boards/ boxes and prevent from dust and water
- Material: Polyamide 6,6, UL94V-2. Washer: NBR
- Color: Black



**IP68**

Part No.	Thread (PF)	Suitable Conduits	D mm (inch)	D1 mm (inch)	L1 mm (inch)	L2 mm (inch)	L3 mm (inch)
FC5-07	1/4"	NFC-07	5.6 (0.22)	ø13.1 (0.51)	17.6 (0.69)	8.5 (0.33)	17.0 (0.67)
FC5-10	1/4"	NFC-10	5.6 (0.22)	ø13.1 (0.51)	17.6 (0.69)	9.0 (0.35)	17.3 (0.68)
FC5-12	3/8"	NFC-12	5.6 (0.22)	ø16.6 (0.65)	17.5 (0.69)	10.8 (0.43)	18.0 (0.71)
FC5-17	1/2"	NFC-17	6.4 (0.25)	ø20.9 (0.82)	17.5 (0.69)	10.8 (0.43)	18.6 (0.73)
FC5-23	3/4"	NFC-23	6.5 (0.26)	ø26.3 (1.04)	17.8 (0.70)	11.5 (0.45)	20.7 (0.81)
FC5-28	1"	NFC-28	7.5 (0.30)	ø33.1 (1.30)	21.5 (0.85)	11.7 (0.46)	20.9 (0.82)
FC5-36	1-1/4"	NFC-36	7.5 (0.30)	ø42.2 (1.66)	22.5 (0.89)	15.0 (0.59)	24.8 (0.98)
FC5-48	2"	NFC-48	8.5 (0.33)	ø59.5 (2.34)	28.5 (1.12)	14.5 (0.57)	27.8 (1.09)