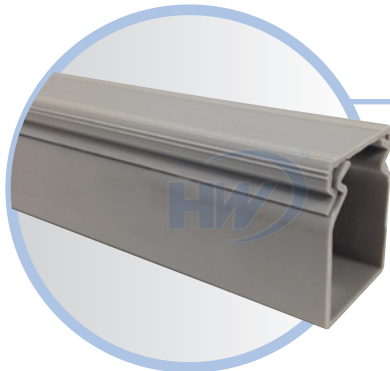
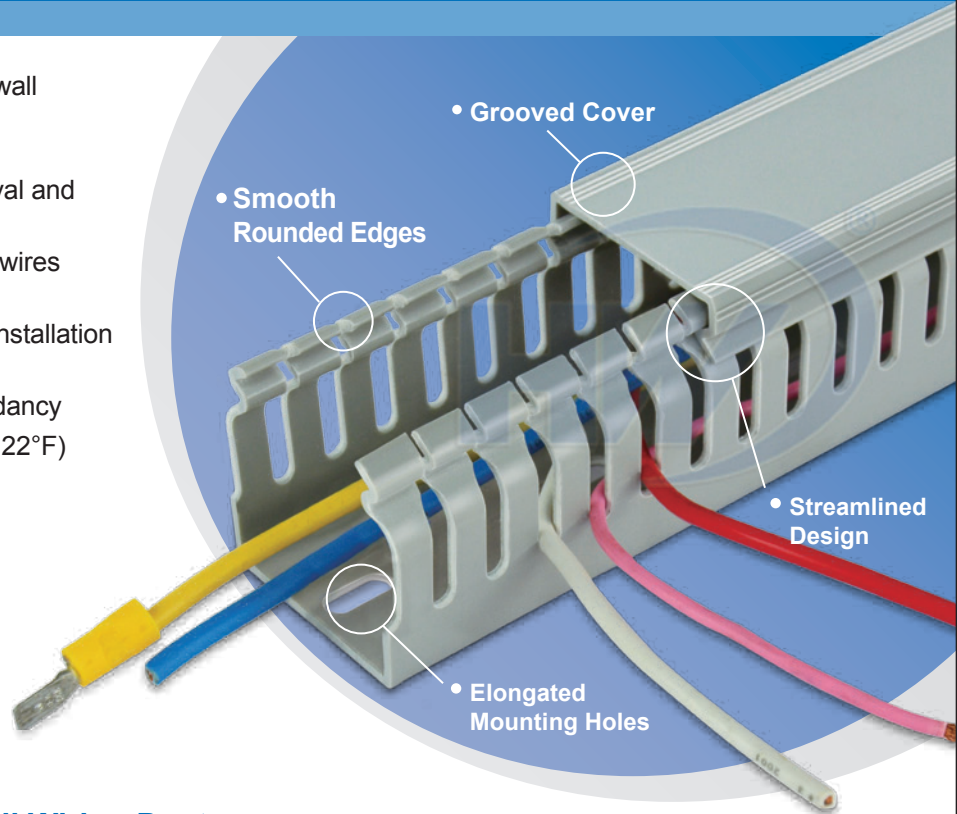




F TYPE WIRING DUCT

- Streamlined design of cover flange and sidewall enables simple assembly and disassembly with less time and hassle
- Grooved cover provides better grip for removal and placement of cover onto base
- Smooth corners and edges keep hands and wires free of abrasion
- Elongated mounting holes are designed for installation versatility and flexibility
- PVC construction is excellent for flame retardancy
- Continuous use temperature is up to 50°C (122°F)
- Base and cover length is 2 meter (6.56 feet)
- Standard color is grey (other colors available upon request)

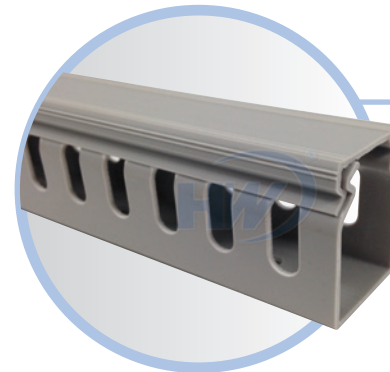
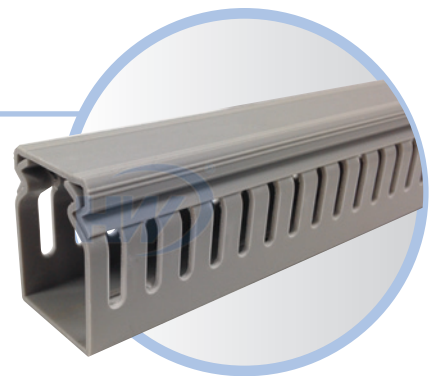


Solid Wall Wiring Duct

Solid wall design fully encloses cables to provide maximum protection and aesthetics

Narrow Slot Wiring Duct

Narrow pitches and slots closely match the spacing of high-density components

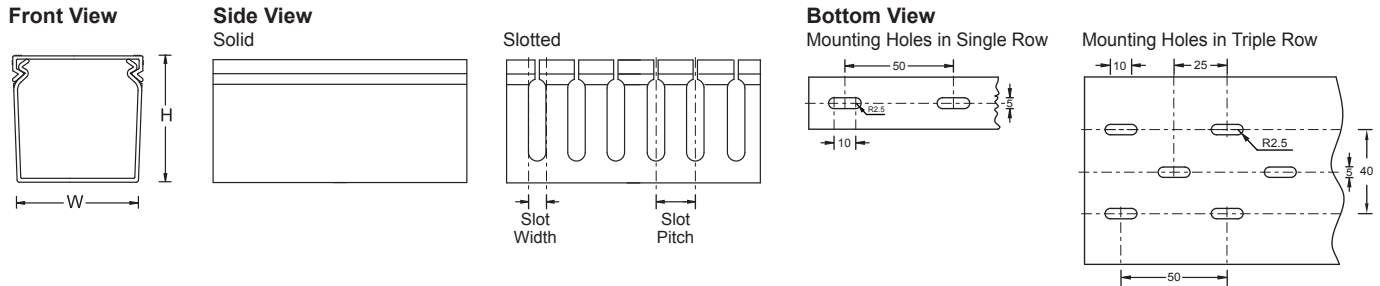


Wide Slot Wiring Duct

Wide pitches and slots increase rigidity and enable insertion of bundles



F TYPE WIRING DUCT



Solid Wall Wiring Duct

Part Number			Duct Size (W x H)		Wire Capacity	Mounting Holes	Carton Quantity		
Duct	Cover	Base	mm	in	2.08 mm ² /14 AWG		Duct	Cover	Base
FW-2020	FW-20	FW-2020-B	20.0 x 20.0	0.87 x 0.87	5 ~ 12 pcs	Single Row	49	150	70
FW-3030	FW-30	FW-3030-B	30.0 x 30.0	1.18 x 1.18	25 ~ 54 pcs	Single Row	25	130	40
FW-4030	FW-40	FW-4030-B	40.0 x 30.0	1.57 x 1.18	40 ~ 55 pcs	Single Row	20	104	30
FW-3040	FW-30	FW-3040-B	30.0 x 40.0	1.18 x 1.57	40 ~ 55 pcs	Single Row	20	130	32
FW-4040	FW-40	FW-4040-B	40.0 x 40.0	1.57 x 1.57	60 ~ 70 pcs	Single Row	16	104	24
FW-6040	FW-60	FW-6040-B	60.0 x 40.0	2.36 x 1.57	100 ~ 115 pcs	Single Row	18	64	24
FW-4060	FW-40	FW-4060-B	40.0 x 60.0	1.57 x 2.36	100 ~ 115 pcs	Single Row	18	104	32
FW-6060	FW-60	FW-6060-B	60.0 x 60.0	2.36 x 2.36	120 ~ 135 pcs	Single Row	12	64	18
FW-8060	FW-80	FW-8060-B	80.0 x 60.0	3.15 x 2.36	180 ~ 210 pcs	Triple Row	9	52	12
FW-6080	FW-60	FW-6080-B	60.0 x 80.0	2.36 x 3.15	180 ~ 210 pcs	Single Row	9	64	18
FW-8080	FW-80	FW-8080-B	80.0 x 80.0	3.15 x 3.15	240 ~ 290 pcs	Triple Row	4	52	8

Narrow Slot Wiring Duct

Part Number			Duct Size (W x H)		Slot Width		Slot Pitch		Wire Capacity	Mounting Holes	Carton Quantity		
Duct	Cover	Base	mm	in	mm	in	mm	in	2.08 mm ² /14 AWG		Duct	Cover	Base
FW-2020S	FW-20	FW-2020-BS	20.0 x 20.0	0.87 x 0.87	4.0	0.16	10.0	0.39	5 ~ 12 pcs	Single Row	49	150	70
FW-3030S	FW-30	FW-3030-BS	30.0 x 30.0	1.18 x 1.18	4.0	0.16	10.0	0.39	25 ~ 54 pcs	Single Row	25	130	40
FW-4030S	FW-40	FW-4030-BS	40.0 x 30.0	1.57 x 1.18	4.0	0.16	10.0	0.39	40 ~ 55 pcs	Single Row	20	104	30
FW-3040S	FW-30	FW-3040-BS	30.0 x 40.0	1.18 x 1.57	4.0	0.16	10.0	0.39	40 ~ 55 pcs	Single Row	20	130	32
FW-4040S	FW-40	FW-4040-BS	40.0 x 40.0	1.57 x 1.57	4.0	0.16	10.0	0.39	60 ~ 70 pcs	Single Row	16	104	24
FW-6040S	FW-60	FW-6040-BS	60.0 x 40.0	2.36 x 1.57	4.0	0.16	10.0	0.39	100 ~ 115 pcs	Single Row	18	64	24
FW-4060S	FW-40	FW-4060-BS	40.0 x 60.0	1.57 x 2.36	4.0	0.16	10.0	0.39	100 ~ 115 pcs	Single Row	18	104	32
FW-6060S	FW-60	FW-6060-BS	60.0 x 60.0	2.36 x 2.36	4.0	0.16	10.0	0.39	120 ~ 135 pcs	Single Row	12	64	18
FW-6080S	FW-60	FW-6080-BS	60.0 x 80.0	2.36 x 3.15	4.0	0.16	10.0	0.39	180 ~ 210 pcs	Single Row	9	64	18

Wide Slot Wiring Duct

Part Number			Duct Size (W x H)		Slot Width		Slot Pitch		Wire Capacity	Mounting Holes	Carton Quantity		
Duct	Cover	Base	mm	in	mm	in	mm	in	2.08 mm ² /14 AWG		Duct	Cover	Base
FW-3030L	FW-30	FW-3030-BL	30.0 x 30.0	1.18 x 1.18	8.0	0.31	18.0	0.71	25 ~ 54 pcs	Single Row	25	130	40
FW-4030L	FW-40	FW-4030-BL	40.0 x 30.0	1.57 x 1.18	8.0	0.31	18.0	0.71	40 ~ 55 pcs	Single Row	20	104	30
FW-3040L	FW-30	FW-3040-BL	30.0 x 40.0	1.18 x 1.57	8.0	0.31	18.0	0.71	40 ~ 55 pcs	Single Row	20	130	32
FW-4040L	FW-40	FW-4040-BL	40.0 x 40.0	1.57 x 1.57	8.0	0.31	18.0	0.71	60 ~ 70 pcs	Single Row	16	104	24
FW-6040L	FW-60	FW-6040-BL	60.0 x 40.0	2.36 x 1.57	8.0	0.31	18.0	0.71	100 ~ 115 pcs	Single Row	18	64	24
FW-4060L	FW-40	FW-4060-BL	40.0 x 60.0	1.57 x 2.36	8.0	0.31	18.0	0.71	100 ~ 115 pcs	Single Row	18	104	32
FW-6060L	FW-60	FW-6060-BL	60.0 x 60.0	2.36 x 2.36	8.0	0.31	18.0	0.71	120 ~ 135 pcs	Single Row	12	64	18
FW-8060L	FW-80	FW-8060-BL	80.0 x 60.0	3.15 x 2.36	8.0	0.31	18.0	0.71	180 ~ 210 pcs	Triple Row	9	52	12
FW-6080L	FW-60	FW-6080-BL	60.0 x 80.0	2.36 x 3.15	8.0	0.31	18.0	0.71	180 ~ 210 pcs	Single Row	9	64	18
FW-8080L	FW-80	FW-8080-BL	80.0 x 80.0	3.15 x 3.15	8.0	0.31	18.0	0.71	240 ~ 290 pcs	Triple Row	4	52	8

