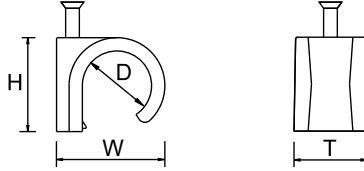


CONTRACT FINISH CABLE CLIPS

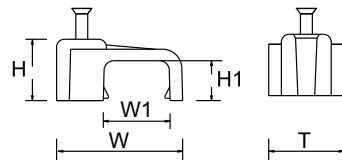
- Fixable, good elasticity, to bear collision, unable broken
- Inserted nail, nail stick to plastic seat, save time and cost down
- Material: Polyethylene (plastic body), carbon steel (nail)
- Color: Mostly white, other colors are also available



Part No.	W mm (inch)	T mm (inch)	H mm (inch)	D mm (inch)	Nails mm (inch)
GB-1	8.4 (0.33)	7.0 (0.28)	4.8 (0.19)	3.0 (0.12)	ø1.5x21 (0.06x0.83)
GB-2	10.0 (0.39)	6.0 (0.24)	7.0 (0.28)	4.6 (0.18)	ø1.8x26 (0.08x1.03)
GB-3	12.0 (0.47)	8.8 (0.35)	9.2 (0.36)	7.0 (0.28)	ø1.8x26 (0.08x1.03)
GB-4	14.8 (0.58)	9.6 (0.38)	12.5 (0.49)	9.5 (0.37)	ø1.8x26 (0.08x1.03)
GB-5	20.0 (0.79)	11.8 (0.46)	17.0 (0.67)	14.8 (0.58)	ø2.5x40 (0.10x1.58)

FLAT CABLE CLIPS

- Fixable, good elasticity, to bear impact, unable broken
- Inserted nail, nail stick to plastic seat, save time and cost down
- Material: Polyethylene (plastic body), carbon steel (nail)
- Color: Mostly white, other colors are also available



Part No.	W mm (inch)	W1 mm (inch)	H mm (inch)	H1 mm (inch)	T mm (inch)	Nails mm (inch)
GF-0.7	12.0 (0.47)	5.5 (0.22)	5.4 (0.21)	3.1 (0.12)	7.0 (0.28)	ø2.0x15 (0.08x0.60)
GF-1.2	13.0 (0.51)	6.2 (0.24)	5.4 (0.21)	3.8 (0.15)	7.4 (0.29)	ø2.0x15 (0.08x0.60)
GF-1.6	14.5 (0.57)	8.0 (0.31)	8.0 (0.31)	5.0 (0.20)	9.3 (0.37)	ø2.0x15 (0.08x0.60)
GF-2.0	16.0 (0.63)	8.5 (0.33)	8.0 (0.31)	5.0 (0.20)	9.9 (0.39)	ø2.5x18 (0.10x0.71)
GF-2.2	17.2 (0.68)	10.0 (0.39)	10.0 (0.39)	6.5 (0.26)	9.9 (0.39)	ø2.5x22 (0.10x0.87)
GFC-PT	10.1 (0.40)	5.0 (0.20)	3.6 (0.14)	1.8 (0.07)	5.4 (0.21)	ø1.5x15 (0.06x0.60)
GFC-0.75	10.8 (0.43)	6.0 (0.24)	6.2 (0.24)	4.1 (0.16)	6.2 (0.24)	ø1.5x18 (0.06x0.71)
GFC-1.0	15.8 (0.62)	8.0 (0.31)	7.5 (0.30)	4.3 (0.17)	9.4 (0.37)	ø2.0x24 (0.08x0.95)
GFC-1.5	16.5 (0.65)	9.0 (0.35)	7.8 (0.31)	5.0 (0.20)	9.5 (0.37)	ø2.0x24 (0.08x0.95)
GFC-2.0	19.3 (0.76)	11.3 (0.44)	8.0 (0.31)	5.0 (0.20)	10.6 (0.42)	ø2.0x24 (0.08x0.95)
GFC-2.5	17.0 (0.67)	10.0 (0.39)	8.3 (0.33)	5.3 (0.21)	10.5 (0.41)	ø2.0x24 (0.08x0.95)
GFC-4.0	19.6 (0.77)	11.4 (0.45)	9.6 (0.38)	6.5 (0.26)	10.5 (0.41)	ø2.0x24 (0.08x0.95)
GFC-6.0	21.0 (0.83)	13.5 (0.53)	10.5 (0.41)	7.2 (0.28)	10.5 (0.41)	ø2.0x29 (0.08x1.15)
GFC-10	24.3 (0.96)	17.2 (0.68)	11.6 (0.46)	8.6 (0.34)	10.3 (0.41)	ø2.0x29 (0.08x1.15)
GFC-16	28.0 (1.10)	20.1 (0.79)	13.4 (0.53)	10.2 (0.40)	12.0 (0.47)	ø2.5x34 (0.10x1.34)