



COMPONENTS

- 1 Blade Guard
- 2 Blade
- 3 Screw
- 4 Trigger
- 5 Hanger Hook
- 6 Ergonomic and Anti-slip design
- 7 Screwdriver & Spare Blade (GIT-703 Plus only)
- 8 Tension Knob
- 9 Easy-to-Read Tension Setting Window

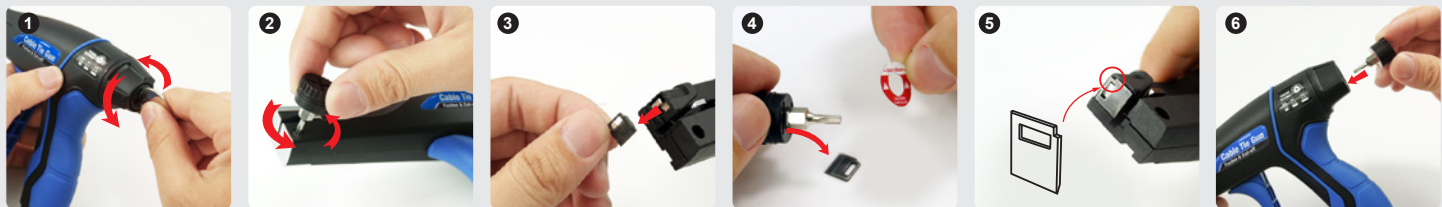
OPERATING INSTRUCTIONS

- 1 Wrap the cable tie on the object and tighten it up.
- 2 Adjust tension settings by rotating the tension control knob.
- 3 Insert the cable tie strap through the tension tool and place the cutting head against the head of the cable tie.
- 4 Press the trigger until the cable tie strap is cut off.
- 5 Finish.

TENSION ADJUSTMENT

Tension knob provides easy, blind tension adjustment. (Chart 1)

Tool Setting	1-3	3-5	5-8
Cable Tie Type	MIN (Miniature)	INT (Intermediate)	STD (Standard)
Cable Tie Width	2.5mm (0.10 inch)	3.6mm (0.14inch)	4.8mm (0.19inch)



BLADE REPLACEMENT (GIT-703 Plus)

▲ Blade may be sharp.

- 1 Firstly, adjust the tension to zero. Release the cap of the tension knob with a coin. Take out the screwdriver.
- 2 Unscrew the blade guard screw with the attached screwdriver. And pull out the blade guard.
- 3 Remove the used blade.
- 4 Remove the sticker on the screwdriver and take out the new blade carefully.
- 5 Put the new blade on the tension tool. Make sure the chamfered corner is in the upper right position. Put the blade guard back.
- 6 Reinstall the screw. Do not over tighten it. Put the attached screwdriver back to the tension tool. Finish.

- Unable to cut the cable tie
 - (1) Check the chart for cable tie spec against torque value. (Chart 1)
 - (2) If cable tie is over-tightening, adjust the knob to lower the torque.
 - (3) If cable tie is not tightening enough, adjust the knob to raise the torque.
 - (4) Open the blade cover and check if the blade is correctly installed.
 - (5) If the blade is damaged, please replace the blade.
 - (6) If the blade is not damaged and unable to operate, please contact your distributor or local seller.
- Unable to operate the tension knob
 - (1) Please contact your distributor or local seller.

MAINTENANCE

The application tool is largely maintenance-free.

REPAIRS

Note: The application tool can be damaged when opening the housing, making changes to the components or if repairs are carried out incorrectly.

Repair work must be carried out by the manufacturer or persons authorized by the manufacturer. This also includes opening the application tool and changing components or functions.

PROBLEM SOLVING

- The trigger does not operate smoothly
 - (1) Check and remove any object that interferes with the operation.
 - (2) If the trigger is still jammed, please contact your distributor or local seller.

PRECAUTION

- Make sure the tool is in good condition before use.
- Use the product according to the operation manual.
- Use gloves if necessary.
- Always wear approved eye protection.
- Avoid hitting the blade cover.
- This product is ideal for plastic cable ties installation. Do not use it with non-plastic cable ties.



WARNINGS

- This product is NOT insulated. Plastic NOT intended for protection against electrical shock. Never use on or near live electrical circuits.
- Do not disassemble housing halves or injury may occur due to spring-loaded components.

