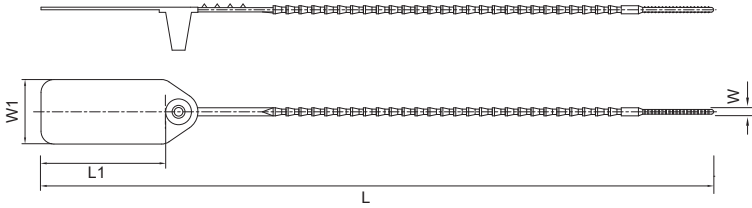


BAG SEALS

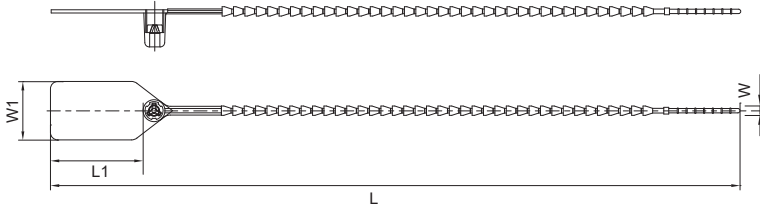
- Large marker area for detail logo or identification numbers
- Material: Polyamide 6 or PP
- Color: All colors are available



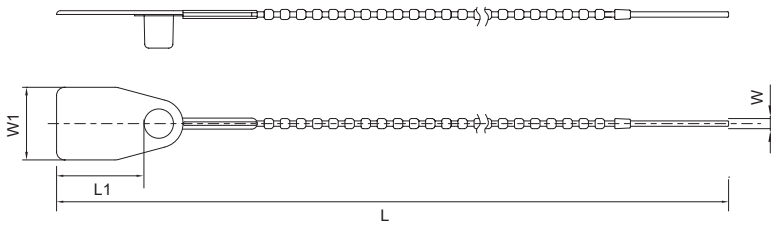
HL-310



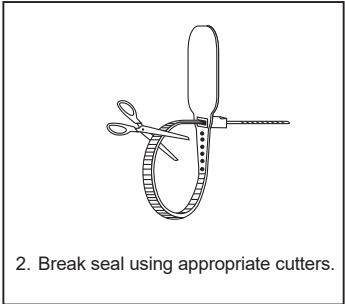
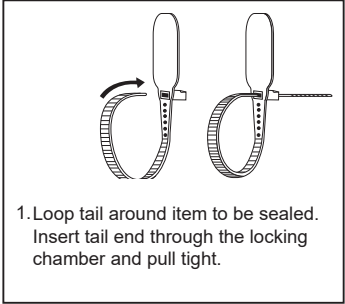
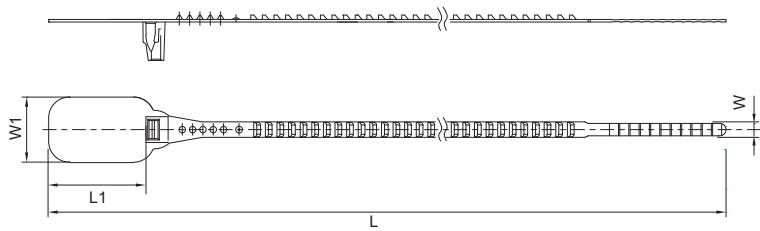
HLP-235



HLX-310



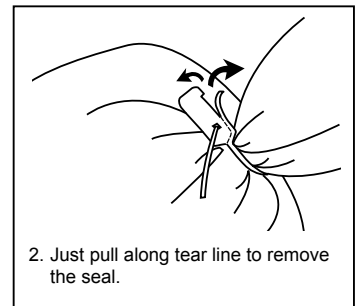
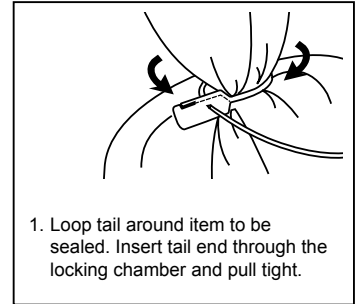
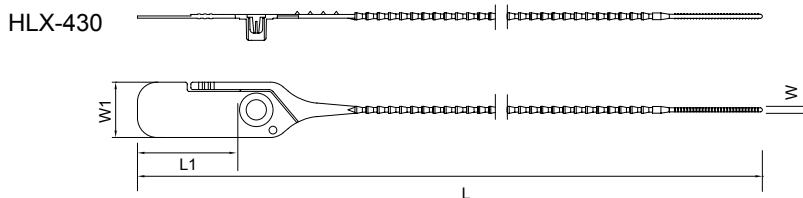
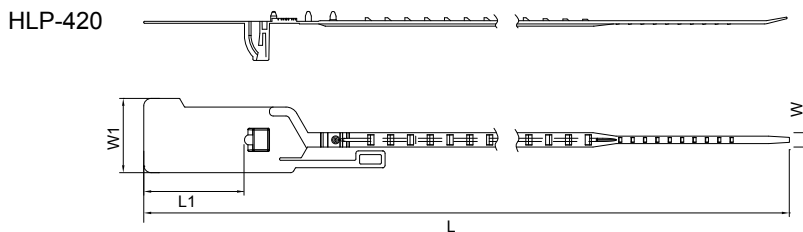
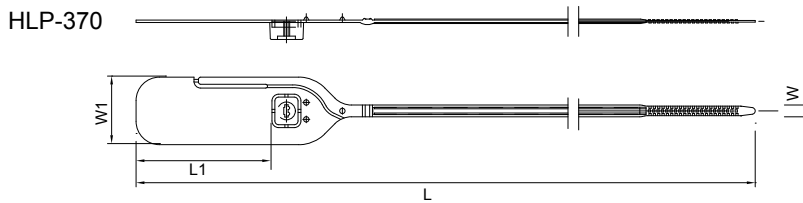
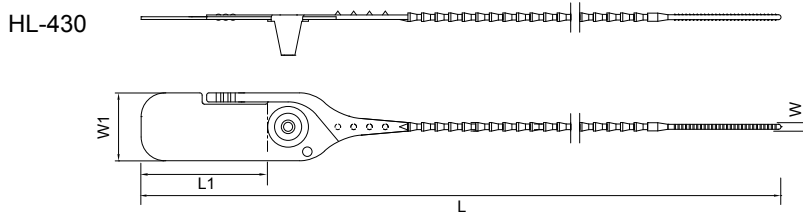
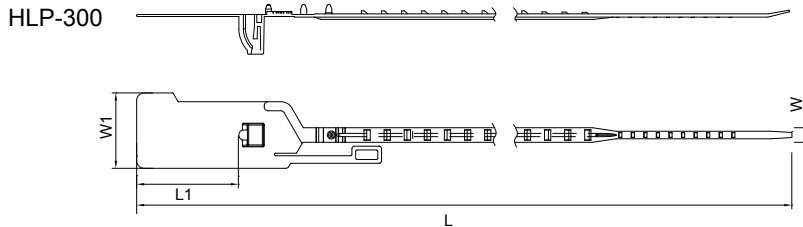
HLP-330



Part No.	Length mm (inch)	Width mm (inch)	Marker Area		Max.Bundle ø mm (inch)	Min. Loop Tensile Strength		
			L1 mm (inch)	W1 mm (inch)		N	kgf	lbf
HL-310	318 (12.52)	3.8 (0.15)	56.3 (2.22)	30.7 (1.21)	60.0 (2.36)	235	24.0	53
HLP-235	237 (9.33)	3.2 (0.13)	32.0 (1.26)	20.1 (0.79)	48.0 (1.89)	126	12.8	28
HLX-310	318 (12.52)	3.8 (0.15)	29.5 (1.16)	27.2 (1.07)	68.0 (2.68)	231	23.6	52
HLP-330	330 (12.99)	6.0 (0.24)	38.0 (1.50)	25.2 (0.99)	67.0 (2.64)	201	20.5	45

MULTI-PURPOSE BAG SEALS

- Large marker area for detail logo or identification numbers
- Remove seal by pulling along tear line
- Material: Polyamide 6 or PP
- Color: All colors are available



Part No.	Length mm (inch)	Width mm (inch)	Marker Area		Max.Bundle ø mm (inch)	Min. Loop Tensile Strength		
			L1 mm (inch)	W1 mm (inch)		N	kgf	lbf
HLP-300	302 (11.89)	5.8 (0.23)	41.0 (1.61)	30.3 (1.19)	50.0 (1.97)	392	40.0	88
HL-430	435 (17.13)	3.8 (0.15)	56.0 (2.20)	30.0 (1.18)	99.0 (3.90)	235	24.0	53
HLP-370	370 (12.09)	5.4 (0.22)	60.5 (2.38)	30.7 (1.21)	71.0 (2.80)	235	24.0	53
HLP-420	422 (16.61)	5.8 (0.23)	41.0 (1.61)	30.3 (1.19)	88.0 (3.46)	438	44.7	98
HLX-430	433 (17.05)	3.8 (0.15)	55.0 (2.17)	29.7 (1.17)	93.0 (3.66)	328	33.4	74