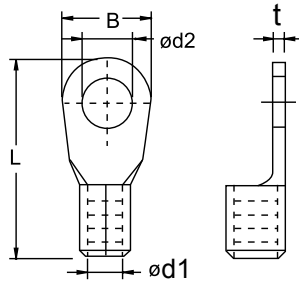


# NON-INSULATED RING TERMINALS (DIN STANDARD)

- Brazed seam protects terminal barrel from splitting during the crimping process
- Material: Copper

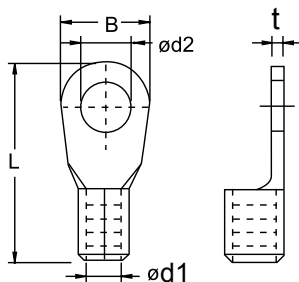


Part No.	Wire Range		Dimension mm (inch)					Stud Size	
	sq. mm.	AWG	d1	d2	B	L	t	mm	inch
DR2.5-1B	0.5-1.5	22-16	1.6 (0.06)	2.7 (0.11)	6.0 (0.24)	14.0 (0.55)	0.8 (0.03)	M2.6	#3
DR3-1B	0.5-1.5	22-16	1.6 (0.06)	3.2 (0.13)	6.0 (0.24)	14.0 (0.55)	0.8 (0.03)	M3	#5
DR3.5-1B	0.5-1.5	22-16	1.6 (0.06)	3.7 (0.15)	6.0 (0.24)	14.0 (0.55)	0.8 (0.03)	M3.5	#6
DR4-1B	0.5-1.5	22-16	1.6 (0.06)	4.3 (0.17)	8.0 (0.31)	16.0 (0.63)	0.8 (0.03)	M4	#8
DR5-1B	0.5-1.5	22-16	1.6 (0.06)	5.3 (0.21)	10.0 (0.39)	18.0 (0.71)	0.8 (0.03)	M5	#10
DR6-1B	0.5-1.5	22-16	1.6 (0.06)	6.5 (0.26)	11.0 (0.43)	19.5 (0.77)	0.8 (0.03)	M6	1/4"
DR3-2.5B	1.5-2.5	16-14	2.3 (0.09)	3.2 (0.13)	6.0 (0.24)	14.0 (0.55)	0.8 (0.03)	M3	#5
DR3.5-2.5B	1.5-2.5	16-14	2.3 (0.09)	3.7 (0.15)	6.0 (0.24)	14.0 (0.55)	0.8 (0.03)	M3.5	#6
DR4-2.5B	1.5-2.5	16-14	2.3 (0.09)	4.3 (0.17)	8.0 (0.31)	16.0 (0.63)	0.8 (0.03)	M4	#8
DR5-2.5B	1.5-2.5	16-14	2.3 (0.09)	5.3 (0.21)	10.1 (0.40)	19.0 (0.75)	0.8 (0.03)	M5	#10
DR6-2.5B	1.5-2.5	16-14	2.3 (0.09)	6.5 (0.26)	11.0 (0.43)	21.5 (0.85)	0.8 (0.03)	M6	1/4"
DR8-2.5B	1.5-2.5	16-14	2.3 (0.09)	8.4 (0.33)	14.0 (0.55)	24.0 (0.94)	0.8 (0.03)	M8	5/16"
DR4-6B	4.0-6.0	12-10	3.6 (0.14)	4.3 (0.17)	8.0 (0.31)	18.0 (0.71)	1.0 (0.04)	M4	#8
DR5-6B	4.0-6.0	12-10	3.6 (0.14)	5.3 (0.21)	10.1 (0.40)	20.0 (0.79)	1.0 (0.04)	M5	#10
DR6-6B	4.0-6.0	12-10	3.6 (0.14)	6.5 (0.26)	11.1 (0.44)	21.5 (0.85)	1.0 (0.04)	M6	1/4"
DR8-6B	4.0-6.0	12-10	3.6 (0.14)	8.4 (0.33)	14.1 (0.56)	26.0 (1.02)	1.0 (0.04)	M8	5/16"
DR10-6B	4.0-6.0	12-10	3.6 (0.14)	10.5 (0.41)	18.0 (0.71)	30.0 (1.18)	1.0 (0.04)	M10	3/8"
DR12-6B	4.0-6.0	12-10	3.6 (0.14)	13.0 (0.51)	19.0 (0.75)	22.5 (0.89)	1.0 (0.04)	M12	1/2"
DR5-10B	10.0	8	4.5 (0.18)	5.3 (0.21)	10.0 (0.39)	21.0 (0.83)	1.1 (0.04)	M5	#10
DR6-10B	10.0	8	4.5 (0.18)	6.5 (0.26)	11.0 (0.43)	22.5 (0.89)	1.1 (0.04)	M6	1/4"
DR8-10B	10.0	8	4.5 (0.18)	8.4 (0.33)	14.0 (0.55)	27.0 (1.06)	1.1 (0.04)	M8	5/16"
DR10-10B	10.0	8	4.5 (0.18)	10.5 (0.41)	18.0 (0.71)	30.0 (1.18)	1.1 (0.04)	M10	3/8"
DR12-10B	10.0	8	4.5 (0.18)	13.0 (0.51)	22.0 (0.87)	34.0 (1.34)	1.1 (0.04)	M12	1/2"
DR5-16B	16.0	6	5.8 (0.23)	5.3 (0.21)	11.0 (0.43)	25.5 (1.00)	1.2 (0.05)	M5	#10
DR6-16B	16.0	6	5.8 (0.23)	6.5 (0.26)	11.0 (0.43)	25.5 (1.00)	1.2 (0.05)	M6	1/4"
DR8-16B	16.0	6	5.8 (0.23)	8.4 (0.33)	14.0 (0.55)	29.0 (1.14)	1.2 (0.05)	M8	5/16"
DR10-16B	16.0	6	5.8 (0.23)	10.5 (0.41)	18.0 (0.71)	33.0 (1.30)	1.2 (0.05)	M10	3/8"
DR12-16B	16.0	6	5.8 (0.23)	13.0 (0.51)	22.0 (0.87)	37.0 (1.46)	1.2 (0.05)	M12	1/2"
DR5-25B	25.0	4	7.5 (0.30)	5.3 (0.21)	12.0 (0.47)	31.0 (1.22)	1.5 (0.06)	M5	#10
DR6-25B	25.0	4	7.5 (0.30)	6.5 (0.26)	12.0 (0.47)	31.0 (1.22)	1.5 (0.06)	M6	1/4"
DR8-25B	25.0	4	7.5 (0.30)	8.4 (0.33)	16.0 (0.63)	33.0 (1.30)	1.5 (0.06)	M8	5/16"
DR10-25B	25.0	4	7.5 (0.30)	10.5 (0.41)	18.0 (0.71)	35.0 (1.38)	1.5 (0.06)	M10	3/8"
DR12-25B	25.0	4	7.5 (0.30)	13.0 (0.51)	22.0 (0.87)	42.0 (1.65)	1.5 (0.06)	M12	1/2"
DR16-25B	25.0	4	7.5 (0.30)	17.0 (0.67)	28.0 (1.10)	49.0 (1.93)	1.5 (0.06)	M16	5/8"

\*DIN46234

# NON-INSULATED RING TERMINALS (DIN STANDARD)

- Brazed seam protects terminal barrel from splitting during the crimping process
- Material: Copper



Part No.	Wire Range		Dimension mm (inch)					Stud Size	
	sq. mm.	AWG	d1	d2	B	L	t	mm	inch
DR6-35B	35.0	2	9.0 (0.35)	6.5 (0.26)	15.0 (0.59)	33.5 (1.32)	1.6 (0.06)	M6	1/4"
DR8-35B	35.0	2	9.0 (0.35)	8.4 (0.33)	16.0 (0.63)	34.0 (1.34)	1.6 (0.06)	M8	5/16"
DR10-35B	35.0	2	9.0 (0.35)	10.5 (0.41)	18.0 (0.71)	36.0 (1.42)	1.6 (0.06)	M10	3/8"
DR12-35B	35.0	2	9.0 (0.35)	13.0 (0.51)	22.0 (0.87)	42.0 (1.65)	1.6 (0.06)	M12	1/2"
DR16-35B	35.0	2	9.0 (0.35)	17.0 (0.67)	28.0 (1.10)	50.0 (1.97)	1.6 (0.06)	M16	5/8"
DR6-50B	50.0	1/0	11.0 (0.43)	6.5 (0.26)	18.0 (0.71)	43.0 (1.69)	1.8 (0.07)	M6	1/4"
DR8-50B	50.0	1/0	11.0 (0.43)	8.4 (0.33)	18.0 (0.71)	43.0 (1.69)	1.8 (0.07)	M8	5/16"
DR10-50B	50.0	1/0	11.0 (0.43)	10.5 (0.41)	18.0 (0.71)	43.0 (1.69)	1.8 (0.07)	M10	3/8"
DR12-50B	50.0	1/0	11.0 (0.43)	13.0 (0.51)	22.0 (0.87)	47.0 (1.85)	1.8 (0.07)	M12	1/2"
DR16-50B	50.0	1/0	11.0 (0.43)	17.0 (0.67)	28.0 (1.10)	54.0 (2.13)	1.8 (0.07)	M16	5/8"
DR6-70B	70.0	2/0	13.0 (0.51)	6.5 (0.26)	22.0 (0.87)	49.0 (1.93)	2.0 (0.08)	M6	1/4"
DR8-70B	70.0	2/0	13.0 (0.51)	8.4 (0.33)	22.0 (0.87)	49.0 (1.93)	2.0 (0.08)	M8	5/16"
DR10-70B	70.0	2/0	13.0 (0.51)	10.5 (0.41)	22.0 (0.87)	49.0 (1.93)	2.0 (0.08)	M10	3/8"
DR12-70B	70.0	2/0	13.0 (0.51)	13.0 (0.51)	22.0 (0.87)	49.0 (1.93)	2.0 (0.08)	M12	1/2"
DR16-70B	70.0	2/0	13.0 (0.51)	17.0 (0.67)	28.0 (1.10)	56.0 (2.20)	2.0 (0.08)	M16	5/8"
DR8-95B	95.0	3/0	15.0 (0.59)	8.4 (0.33)	24.0 (0.94)	54.0 (2.13)	2.5 (0.10)	M8	5/16"
DR10-95B	95.0	3/0	15.0 (0.59)	10.5 (0.41)	24.0 (0.94)	54.0 (2.13)	2.5 (0.10)	M10	3/8"
DR12-95B	95.0	3/0	15.0 (0.59)	13.0 (0.51)	24.0 (0.94)	54.0 (2.13)	2.5 (0.10)	M12	1/2"
DR16-95B	95.0	3/0	15.0 (0.59)	17.0 (0.67)	28.0 (1.10)	58.0 (2.28)	2.5 (0.10)	M16	5/8"
DR8-120B	120.0	4/0	16.5 (0.65)	8.4 (0.33)	24.0 (0.94)	56.0 (2.20)	3.0 (0.12)	M8	5/16"
DR10-120B	120.0	4/0	16.5 (0.65)	10.5 (0.41)	24.0 (0.94)	56.0 (2.20)	3.0 (0.12)	M10	3/8"
DR12-120B	120.0	4/0	16.5 (0.65)	13.0 (0.51)	24.0 (0.94)	56.0 (2.20)	3.0 (0.12)	M12	1/2"
DR16-120B	120.0	4/0	16.5 (0.65)	17.0 (0.67)	28.0 (1.10)	58.0 (2.28)	3.0 (0.12)	M16	5/8"
DR10-150B	150.0	250/300	19.0 (0.75)	10.5 (0.41)	30.0 (1.18)	65.0 (2.56)	3.2 (0.13)	M10	3/8"
DR12-150B	150.0	250/300	19.0 (0.75)	13.0 (0.51)	30.0 (1.18)	65.0 (2.56)	3.2 (0.13)	M12	1/2"
DR16-150B	150.0	250/300	19.0 (0.75)	17.0 (0.67)	30.0 (1.18)	65.0 (2.56)	3.2 (0.13)	M16	5/8"
DR10-185B	185.0	300/350	21.0 (0.83)	10.5 (0.41)	36.0 (1.42)	68.0 (2.68)	3.5 (0.14)	M10	3/8"
DR12-185B	185.0	300/350	21.0 (0.83)	13.0 (0.51)	36.0 (1.42)	68.0 (2.68)	3.5 (0.14)	M12	1/2"
DR16-185B	185.0	300/350	21.0 (0.83)	17.0 (0.67)	36.0 (1.42)	68.0 (2.68)	3.5 (0.14)	M16	5/8"
DR10-240B	240.0	400/450	23.5 (0.93)	10.5 (0.41)	38.0 (1.50)	75.0 (2.95)	4.0 (0.16)	M10	3/8"
DR12-240B	240.0	400/450	23.5 (0.93)	13.0 (0.51)	38.0 (1.50)	75.0 (2.95)	4.0 (0.16)	M12	1/2"
DR16-240B	240.0	400/450	23.5 (0.93)	17.0 (0.67)	38.0 (1.50)	75.0 (2.95)	4.0 (0.16)	M16	5/8"

Wire Termination  
Terminals

\*DIN46234