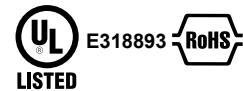
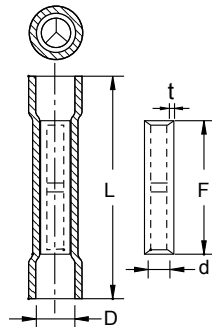


VINYL-INSULATED BUTT SPLICES

- Expanded wire entry designed to accommodate wires with a larger insulation thickness
- Designed to splice two solid or stranded wires together to repair or lengthen wires
- Brazed seam protects terminal barrel from splitting during the crimping process
- Internal wire stop assures proper length of insertion into terminal barrel
- Material: Copper tube with tin plated end sleeves with insulation PVC



Part No.	Material	Color	Wire Range		Dimension mm (inch)				
			sq. mm.	AWG	D	d	L	F	t
VI1.25S	Copper Plate	Red	0.5-1.5	22-16	4.0 (0.16)	1.8 (0.07)	24.0 (0.94)	15.0 (0.59)	0.5 (0.02)
VI1.25M	Copper Plate	Red	0.5-1.5	22-16	4.3 (0.17)	2.1 (0.08)	25.0 (0.98)	15.0 (0.59)	0.7 (0.03)
VI1.25	Copper Plate	Red	0.5-1.5	22-16	4.3 (0.17)	1.7 (0.07)	25.0 (0.98)	15.0 (0.59)	0.8 (0.03)
VI1.25T	Copper Tubular	Red	0.5-1.5	22-16	4.3 (0.17)	1.7 (0.07)	25.0 (0.98)	15.0 (0.59)	0.8 (0.03)
VI2S	Copper Plate	Blue	1.5-2.5	16-14	4.3 (0.17)	2.3 (0.09)	24.0 (0.94)	15.0 (0.59)	0.5 (0.02)
VI2M	Copper Plate	Blue	1.5-2.5	16-14	4.5 (0.18)	2.8 (0.11)	25.0 (0.98)	15.0 (0.59)	0.7 (0.03)
VI2	Copper Plate	Blue	1.5-2.5	16-14	4.5 (0.18)	2.3 (0.09)	25.0 (0.98)	15.0 (0.59)	0.8 (0.03)
VI2T	Copper Tubular	Blue	1.5-2.5	16-14	4.5 (0.18)	2.4 (0.09)	25.0 (0.98)	15.0 (0.59)	0.8 (0.03)
VI5.5S	Copper Plate	Yellow	4.0-6.0	12-10	6.3 (0.25)	3.8 (0.15)	25.5 (1.00)	15.0 (0.59)	0.5 (0.02)
VI5.5M	Copper Plate	Yellow	4.0-6.0	12-10	6.5 (0.26)	3.8 (0.15)	27.0 (1.06)	15.0 (0.59)	0.8 (0.03)
VI5.5	Copper Plate	Yellow	4.0-6.0	12-10	6.5 (0.26)	3.4 (0.13)	27.0 (1.06)	15.0 (0.59)	1.0 (0.04)
VI5.5T	Copper Tubular	Yellow	4.0-6.0	12-10	6.5 (0.26)	3.57 (0.14)	27.0 (1.06)	15.0 (0.59)	1.0 (0.04)